

NIP7 Antibody (C-term)

Affinity Purified Rabbit Polyclonal Antibody (Pab)

Catalog # AP8691b

Product Information

Application	FC, WB, E
Primary Accession	Q9Y221
Other Accession	Q56P27 , Q9CXK8
Reactivity	Human
Predicted	Mouse, Pig
Host	Rabbit
Clonality	Polyclonal
Isotype	Rabbit IgG
Clone Names	RB22644
Calculated MW	20463
Antigen Region	150-177

Additional Information

Gene ID	51388
Other Names	60S ribosome subunit biogenesis protein NIP7 homolog, KD93, NIP7
Target/Specificity	This NIP7 antibody is generated from rabbits immunized with a KLH conjugated synthetic peptide between 150-177 amino acids from the C-terminal region of human NIP7.
Dilution	FC~~1:10~50 WB~~1:1000 E~~Use at an assay dependent concentration.
Format	Purified polyclonal antibody supplied in PBS with 0.09% (W/V) sodium azide. This antibody is purified through a protein A column, followed by peptide affinity purification.
Storage	Maintain refrigerated at 2-8°C for up to 2 weeks. For long term storage store at -20°C in small aliquots to prevent freeze-thaw cycles.
Precautions	NIP7 Antibody (C-term) is for research use only and not for use in diagnostic or therapeutic procedures.

Protein Information

Name	NIP7
Function	Required for proper 34S pre-rRNA processing and 60S ribosome subunit assembly.

Cellular Location	Nucleus, nucleolus
Tissue Location	Expressed in hematopoietic stem/progenitor cells.

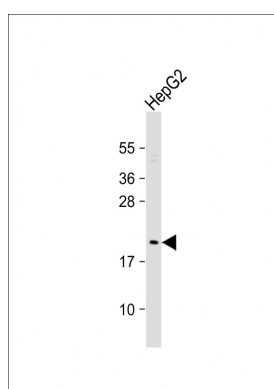
Background

Required for proper 27S pre-rRNA processing and 60S ribosome subunit assembly.

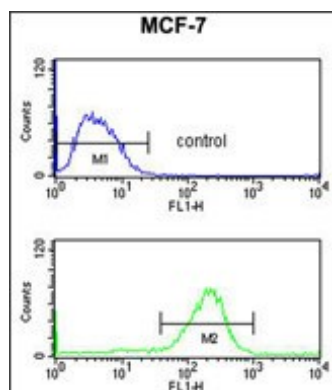
References

Liu,J.F., et.al., J. Struct. Biol. 148 (3), 370-374 (2004)
 Chagnon,P., et.al., Am. J. Hum. Genet. 71 (6), 1443-1449 (2002)

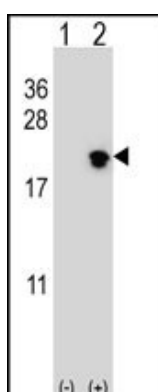
Images



Anti-NIP7 Antibody (C-term) at 1:1000 dilution + HepG2 whole cell lysate. Lysates/proteins at 20 µg per lane. Secondary Goat Anti-Rabbit IgG, (H+L), Peroxidase conjugated at 1/10000 dilution. Predicted band size : 20 kDa. Blocking/Dilution buffer: 5% NFDM/TBST.



NIP7 Antibody (C-term) (Cat. #AP8691b) flow cytometry analysis of MCF-7 cells (bottom histogram) compared to a negative control cell (top histogram). FITC-conjugated goat-anti-rabbit secondary antibodies were used for the analysis.



Western blot analysis of NIP7 (arrow) using rabbit polyclonal NIP7 Antibody (C-term) (Cat. #AP8691b). 293 cell lysates (2 µg/lane) either nontransfected (Lane 1) or transiently transfected (Lane 2) with the NIP7 gene.