

PECI Antibody (C-term)

Affinity Purified Rabbit Polyclonal Antibody (Pab)

Catalog # AP8692b

Product Information

Application	WB, IHC-P, FC, E
Primary Accession	O75521
Reactivity	Human
Host	Rabbit
Clonality	Polyclonal
Isotype	Rabbit IgG
Clone Names	RB22645
Calculated MW	43585
Antigen Region	331-358

Additional Information

Gene ID	10455
Other Names	Enoyl-CoA delta isomerase 2, mitochondrial, DRS-1, Delta(3), delta(2)-enoyl-CoA isomerase, D3, D2-enoyl-CoA isomerase, Diazepam-binding inhibitor-related protein 1, DBI-related protein 1, Dodecenoyl-CoA isomerase, Hepatocellular carcinoma-associated antigen 88, Peroxisomal 3, 2-trans-enoyl-CoA isomerase, pECI, Renal carcinoma antigen NY-REN-1, ECI2, DRS1, HCA88, PECI
Target/Specificity	This PECI antibody is generated from rabbits immunized with a KLH conjugated synthetic peptide between 331-358 amino acids from the C-terminal region of human PECI.
Dilution	WB~~1:1000 IHC-P~~1:100~500 FC~~1:10~50 E~~Use at an assay dependent concentration.
Format	Purified polyclonal antibody supplied in PBS with 0.09% (W/V) sodium azide. This antibody is purified through a protein A column, followed by peptide affinity purification.
Storage	Maintain refrigerated at 2-8°C for up to 2 weeks. For long term storage store at -20°C in small aliquots to prevent freeze-thaw cycles.
Precautions	PECI Antibody (C-term) is for research use only and not for use in diagnostic or therapeutic procedures.

Protein Information

Name	ECI2
-------------	------

Synonyms	DRS1, HCA88, Peci {ECO:0000303 PubMed:10}
Function	Able to isomerize both 3-cis and 3-trans double bonds into the 2-trans form in a range of enoyl-CoA species. Has a preference for 3-trans substrates.
Cellular Location	[Isoform 1]: Mitochondrion {ECO:0000250 UniProtKB:Q5XIC0}
Tissue Location	Abundant in heart, skeletal muscle and liver. Expressed in CD34(+) T-cells and CD34(+) bone marrow cells

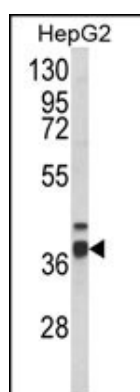
Background

PECI is an auxiliary enzyme that catalyzes an isomerization step required for the beta-oxidation of unsaturated fatty acids.

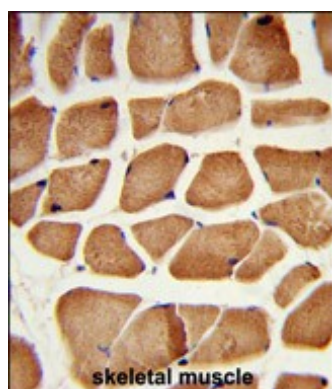
References

Scanlan,M.J., et.al., Int. J. Cancer 83 (4), 456-464 (1999)
 Suk,K., et.al., Biochim. Biophys. Acta 1454 (1), 126-131 (1999)

Images

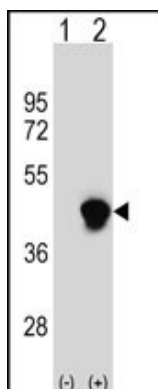
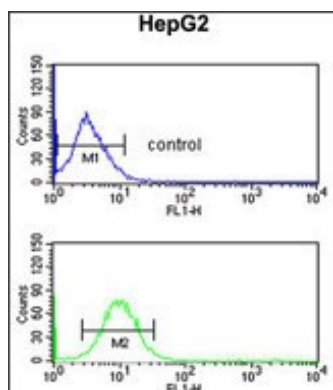


Western blot analysis of Peci Antibody (C-term) (Cat. #AP8692b) in HepG2 cell line lysates (35ug/lane).Peci (arrow) was detected using the purified Pab.



Formalin-fixed and paraffin-embedded human skeletal muscle reacted with Peci Antibody (C-term), which was peroxidase-conjugated to the secondary antibody, followed by DAB staining. This data demonstrates the use of this antibody for immunohistochemistry; clinical relevance has not been evaluated.

PECI Antibody (C-term) (Cat. #AP8692b) flow cytometric analysis of HepG2 cells (bottom histogram) compared to a negative control cell (top histogram).FITC-conjugated goat-anti-rabbit secondary antibodies were used for the analysis.



Western blot analysis of Peci (arrow) using rabbit polyclonal Peci Antibody (C-term) (Cat. #AP8692b). 293 cell lysates (2 ug/lane) either nontransfected (Lane 1) or transiently transfected (Lane 2) with the Peci gene.

Please note: All products are 'FOR RESEARCH USE ONLY. NOT FOR USE IN DIAGNOSTIC OR THERAPEUTIC PROCEDURES'.