

# LTF Antibody

Affinity Purified Rabbit Polyclonal Antibody (Pab)

Catalog # AP8698A

## Product Information

---

Application	WB, E
Primary Accession	<a href="#">P02788</a>
Reactivity	Human, Mouse
Host	Rabbit
Clonality	Polyclonal
Isotype	Rabbit IgG
Clone Names	RB22673
Calculated MW	78182

## Additional Information

---

Gene ID	4057
Other Names	Lactotransferrin, Lactoferrin, 3421-, Growth-inhibiting protein 12, Talalactoferrin, Lactoferricin-H, Lfcin-H, Kaliocin-1, Lactoferroxin-A, Lactoferroxin-B, Lactoferroxin-C, LTF, GIG12, LF
Target/Specificity	This LTF antibody is generated from rabbits immunized with LTF recombinant protein.
Dilution	WB~~1:1000 E~~Use at an assay dependent concentration.
Format	Purified polyclonal antibody supplied in PBS with 0.09% (W/V) sodium azide. This antibody is purified through a protein A column, followed by peptide affinity purification.
Storage	Maintain refrigerated at 2-8°C for up to 2 weeks. For long term storage store at -20°C in small aliquots to prevent freeze-thaw cycles.
Precautions	LTF Antibody is for research use only and not for use in diagnostic or therapeutic procedures.

## Protein Information

---

Name	LTF ( <a href="#">HGNC:6720</a> )
Synonyms	GIG12, LF
Function	Transferrins are iron binding transport proteins which can bind two Fe(3+) ions in association with the binding of an anion, usually bicarbonate.

<b>Cellular Location</b>	[Isoform 1]: Secreted. Cytoplasmic granule. Note=Secreted into most exocrine fluids by various endothelial cells Stored in the secondary granules of neutrophils
<b>Tissue Location</b>	High levels are found in saliva and tears, intermediate levels in serum and plasma, and low levels in urine. In kidney, detected in the distal collecting tubules in the medulla but not in the cortical region or in blood vessels. Detected in peripheral blood neutrophils (at protein level). Isoform 1 and isoform DeltaLf are expressed in breast, prostate, spleen, pancreas, kidney, small intestine, lung, skeletal muscle, uterus, thymus and fetal liver Isoform 1 is expressed in brain, testis and peripheral blood leukocytes; isoform DeltaLf is barely detectable in these tissues Isoform DeltaLf is expressed in placenta, liver and ovary; isoform 1 is barely detectable in these tissues. In kidney, isoform 1 is expressed at high levels in the collecting tubules of the medulla but at very low levels in the cortex.

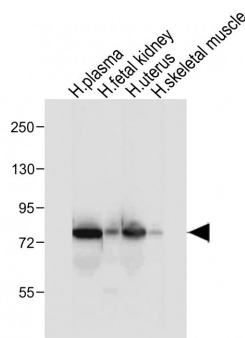
## Background

LTF is found in the secondary granules of neutrophils. The protein is a major iron-binding protein in milk and body secretions with an antimicrobial activity, making it an important component of the non-specific immune system. The protein demonstrates a broad spectrum of properties, including regulation of iron homeostasis, host defense against a broad range of microbial infections, anti-inflammatory activity, regulation of cellular growth and differentiation and protection against cancer development and metastasis.

## References

Willnow,T.E., et.al., J. Biol. Chem. 267 (36), 26172-26180 (1992)

## Images



All lanes : Anti-LTF Antibody at 1:1000 dilution Lane 1: Human plasma tissue lysate Lane 2: Human fetal kidney tissue lysate Lane 3: Human uterus tissue lysate Lane 4: Human skeletal muscle tissue lysate Lysates/proteins at 20 µg per lane. Secondary Goat Anti-Rabbit IgG, (H+L), Peroxidase conjugated at 1/10000 dilution. Predicted band size : 78 kDa Blocking/Dilution buffer: 5% NFDM/TBST.

## Citations

- [Targeted EpCAM-binding for the development of potent and effective anticancer proteins](#)

Please note: All products are 'FOR RESEARCH USE ONLY. NOT FOR USE IN DIAGNOSTIC OR THERAPEUTIC PROCEDURES'.