

HNF1A Antibody (Center)

Purified Rabbit Polyclonal Antibody (Pab)

Catalog # AP8717c

Product Information

Application	WB, IF, E
Primary Accession	P20823
Other Accession	P15257 , P22361
Reactivity	Human, Rat, Mouse
Predicted	Rat
Host	Rabbit
Clonality	Polyclonal
Isotype	Rabbit IgG
Clone Names	RB22893
Calculated MW	67386
Antigen Region	177-205

Additional Information

Gene ID	6927
Other Names	Hepatocyte nuclear factor 1-alpha, HNF-1-alpha, HNF-1A, Liver-specific transcription factor LF-B1, LFB1, Transcription factor 1, TCF-1, HNF1A, TCF1
Target/Specificity	This HNF1A antibody is generated from rabbits immunized with a KLH conjugated synthetic peptide between 177-205 amino acids from the Central region of human HNF1A.
Dilution	WB~~1:1000 IF~~1:10~50 E~~Use at an assay dependent concentration.
Format	Purified polyclonal antibody supplied in PBS with 0.09% (W/V) sodium azide. This antibody is purified through a protein A column, followed by peptide affinity purification.
Storage	Maintain refrigerated at 2-8°C for up to 2 weeks. For long term storage store at -20°C in small aliquots to prevent freeze-thaw cycles.
Precautions	HNF1A Antibody (Center) is for research use only and not for use in diagnostic or therapeutic procedures.

Protein Information

Name	HNF1A
Synonyms	TCF1

Function	Transcriptional activator that regulates the tissue specific expression of multiple genes, especially in pancreatic islet cells and in liver (By similarity). Binds to the inverted palindrome 5'- GTTAATNATTAAC-3' (PubMed: 10966642 , PubMed: 12453420). Activates the transcription of CYP1A2, CYP2E1 and CYP3A11 (By similarity).
Cellular Location	Nucleus {ECO:0000255 PROSITE-ProRule:PRU00108, ECO:0000269 PubMed:10966642, ECO:0000269 PubMed:38018242}
Tissue Location	Liver.

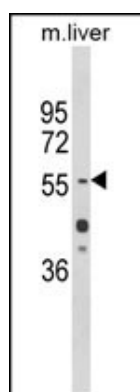
Background

HNF1A is a transcription factor required for the expression of several liver-specific genes. This protein functions as a homodimer and binds to the inverted palindrome 5'-GTTAATNATTAAC-3'.

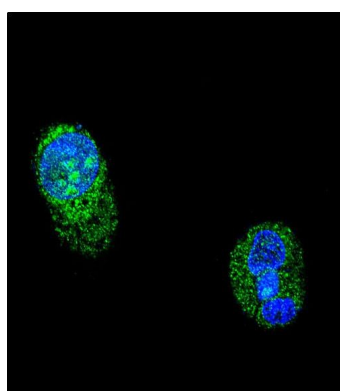
References

Bach,I., et.al., Genomics 8 (1), 155-164 (1990)

Images



Western blot analysis of HNF1A Antibody (Center) (Cat. #AP8717c) in mouse liver tissue lysates (35ug/lane). HNF1A (arrow) was detected using the purified Pab.



Confocal immunofluorescent analysis of HNF1A Antibody (Center)(Cat#AP8717c) with HepG2 cell followed by Alexa Fluor® 488-conjugated goat anti-rabbit IgG (green). DAPI was used to stain the cell nuclear (blue).

Please note: All products are 'FOR RESEARCH USE ONLY. NOT FOR USE IN DIAGNOSTIC OR THERAPEUTIC PROCEDURES'.