

# MC3R Antibody (Center)

Affinity Purified Rabbit Polyclonal Antibody (Pab)

Catalog # AP8719c

## Product Information

---

<b>Application</b>	WB, FC, E
<b>Primary Accession</b>	<a href="#">P41968</a>
<b>Reactivity</b>	Human
<b>Host</b>	Rabbit
<b>Clonality</b>	Polyclonal
<b>Isotype</b>	Rabbit IgG
<b>Clone Names</b>	RB22917
<b>Calculated MW</b>	36043
<b>Antigen Region</b>	86-112

## Additional Information

---

<b>Gene ID</b>	4159
<b>Other Names</b>	Melanocortin receptor 3, MC3-R, MC3R
<b>Target/Specificity</b>	This MC3R antibody is generated from rabbits immunized with a KLH conjugated synthetic peptide between 86-112 amino acids from the Central region of human MC3R.
<b>Dilution</b>	WB~~1:1000 FC~~1:10~50 E~~Use at an assay dependent concentration.
<b>Format</b>	Purified polyclonal antibody supplied in PBS with 0.09% (W/V) sodium azide. This antibody is purified through a protein A column, followed by peptide affinity purification.
<b>Storage</b>	Maintain refrigerated at 2-8°C for up to 2 weeks. For long term storage store at -20°C in small aliquots to prevent freeze-thaw cycles.
<b>Precautions</b>	MC3R Antibody (Center) is for research use only and not for use in diagnostic or therapeutic procedures.

## Protein Information

---

<b>Name</b>	MC3R
<b>Function</b>	Receptor for MSH (alpha, beta and gamma) and ACTH. This receptor is mediated by G proteins which activate adenylate cyclase. Required for expression of anticipatory patterns of activity and wakefulness during periods of limited nutrient availability and for the normal regulation of circadian clock activity in the brain.

**Cellular Location** Cell membrane; Multi-pass membrane protein.

**Tissue Location** Brain, placental, and gut tissues.

## Background

---

MC3R is a G-protein-coupled receptor for melanocyte-stimulating hormone and adrenocorticotrophic hormone that is expressed in tissues other than the adrenal cortex and melanocytes. This gene maps to the same region as the locus for benign neonatal epilepsy.

## References

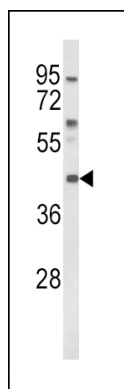
---

Magenis, R.E., et.al., Mamm. Genome 5 (8), 503-508 (1994)

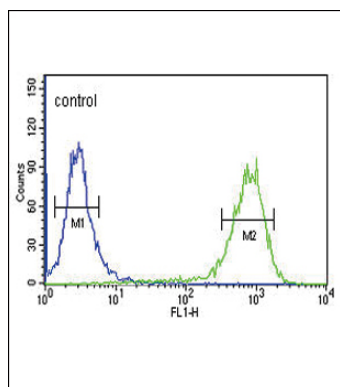
Konda, Y., et.al., J. Biol. Chem. 269 (18), 13162-13166 (1994)

## Images

---



Western blot analysis of MC3R Antibody (Center) (Cat. #AP8719c) in K562 cell line lysates (35ug/lane). MC3R (arrow) was detected using the purified Pab.



MC3R Antibody (Center) (Cat. #AP8719c) flow cytometric analysis of K562 cells (right histogram) compared to a negative control cell (left histogram). FITC-conjugated goat-anti-rabbit secondary antibodies were used for the analysis.

Please note: All products are 'FOR RESEARCH USE ONLY. NOT FOR USE IN DIAGNOSTIC OR THERAPEUTIC PROCEDURES'.