

BAT4 Antibody (C-term)

Affinity Purified Rabbit Polyclonal Antibody (Pab)

Catalog # AP8721b

Product Information

Application	WB, IHC-P, FC, E
Primary Accession	O95872
Reactivity	Human
Host	Rabbit
Clonality	Polyclonal
Isotype	Rabbit IgG
Clone Names	RB22066
Calculated MW	39314
Antigen Region	275-302

Additional Information

Gene ID	7918
Other Names	G patch domain and ankyrin repeat-containing protein 1, Ankyrin repeat domain-containing protein 59, G patch domain-containing protein 10, HLA-B-associated transcript 4, Protein G5, GPANK1, ANKRD59, BAT4, G5, GPATCH10
Target/Specificity	This BAT4 antibody is generated from rabbits immunized with a KLH conjugated synthetic peptide between 275-302 amino acids from the C-terminal region of human BAT4.
Dilution	WB~~1:1000 IHC-P~~1:100~500 FC~~1:10~50 E~~Use at an assay dependent concentration.
Format	Purified polyclonal antibody supplied in PBS with 0.09% (W/V) sodium azide. This antibody is purified through a protein A column, followed by peptide affinity purification.
Storage	Maintain refrigerated at 2-8°C for up to 2 weeks. For long term storage store at -20°C in small aliquots to prevent freeze-thaw cycles.
Precautions	BAT4 Antibody (C-term) is for research use only and not for use in diagnostic or therapeutic procedures.

Protein Information

Name	GPANK1
Synonyms	ANKRD59, BAT4, G5, GPATCH10

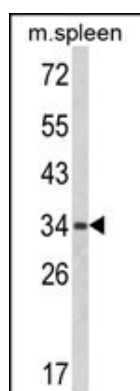
Background

BAT4 is thought to be involved in some aspects of immunity.

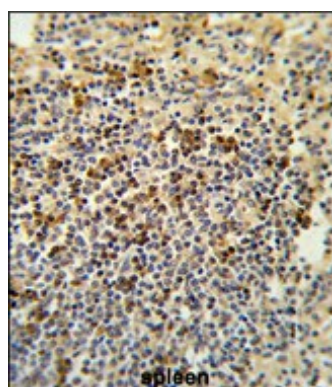
References

Spies,T., et.al., Proc. Natl. Acad. Sci. U.S.A. 86 (22), 8955-8958 (1989)

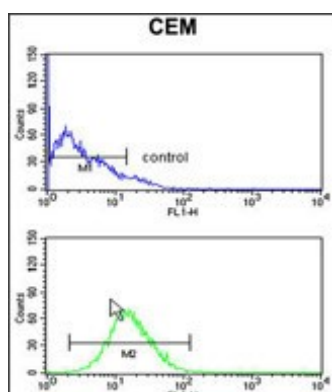
Images



Western blot analysis of BAT4 Antibody (C-term) (Cat. #AP8721b) in mouse spleen tissue lysates (35ug/lane). BAT4 (arrow) was detected using the purified Pab.

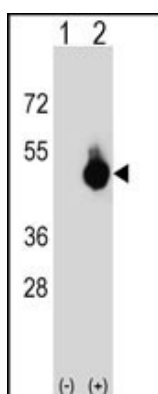


Formalin-fixed and paraffin-embedded human spleen tissue reacted with BAT4 Antibody (C-term), which was peroxidase-conjugated to the secondary antibody, followed by DAB staining. This data demonstrates the use of this antibody for immunohistochemistry; clinical relevance has not been evaluated.



BAT4 Antibody (C-term) (Cat. #AP8721b) flow cytometry analysis of CEM cells (bottom histogram) compared to a negative control cell (top histogram). FITC-conjugated goat-anti-rabbit secondary antibodies were used for the analysis.

Western blot analysis of BAT4 (arrow) using rabbit polyclonal BAT4 Antibody (C-term) (Cat. #AP8721b). 293 cell lysates (2 ug/lane) either nontransfected (Lane 1) or transiently transfected (Lane 2) with the BAT4 gene.



Please note: All products are 'FOR RESEARCH USE ONLY. NOT FOR USE IN DIAGNOSTIC OR THERAPEUTIC PROCEDURES'.