

CD151 Antibody (Center)

Affinity Purified Rabbit Polyclonal Antibody (Pab)

Catalog # AP8751c

Product Information

Application	WB, E
Primary Accession	P48509
Reactivity	Human
Host	Rabbit
Clonality	Polyclonal
Isotype	Rabbit IgG
Clone Names	RB22792
Calculated MW	28295

Additional Information

Gene ID	977
Other Names	CD151 antigen, GP27, Membrane glycoprotein SFA-1, Platelet-endothelial tetraspan antigen 3, PETA-3, Tetraspanin-24, Tspan-24, CD151, CD151, TSPAN24
Target/Specificity	This CD151 antibody is generated from rabbits immunized with a KLH conjugated synthetic peptide selected from the Center region of human CD151.
Dilution	WB~~1:2000 E~~Use at an assay dependent concentration.
Format	Purified polyclonal antibody supplied in PBS with 0.09% (W/V) sodium azide. This antibody is purified through a protein A column, followed by peptide affinity purification.
Storage	Maintain refrigerated at 2-8°C for up to 2 weeks. For long term storage store at -20°C in small aliquots to prevent freeze-thaw cycles.
Precautions	CD151 Antibody (Center) is for research use only and not for use in diagnostic or therapeutic procedures.

Protein Information

Name	CD151
Synonyms	TSPAN24
Function	Structural component of specialized membrane microdomains known as tetraspanin-enriched microdomains (TERMs), which act as platforms for

receptor clustering and signaling. Plays a role in various cellular and molecular mechanism through its association with both integrin and non-integrin proteins. These interactions facilitate critical cellular functions, including cell-to-cell communication, wound healing, platelet aggregation, trafficking, cell motility, and angiogenesis (PubMed:[17045834](#), PubMed:[24723389](#), PubMed:[31488507](#)). Via interaction with JAM-A/F11R and integrin ITGA3:ITGB1, promotes the recruitment of signaling molecules such as RAC1, CDC42 and RhoGTPases to facilitate the polarization of epithelial cells and the reorganization of the actin cytoskeleton, which are critical steps in cell migration process (PubMed:[22843693](#), PubMed:[35067832](#)). Regulates the glycosylation pattern of ITGA3:ITGB1 thereby modulating its activity (PubMed:[18852263](#)). Plays an essential role in the maintenance of central laminin-binding integrin ITGA6:ITGB4-containing adhesion complexes (PubMed:[31488507](#)). Essential for the proper assembly of the glomerular and tubular basement membranes in kidney (PubMed:[15265795](#)). Contributes to T-cell activation by modulating integrin signaling leading to activation of downstream targets PTK2 and MAPK1/MAPK3 (PubMed:[24723389](#)).

Cellular Location

Cell membrane; Multi-pass membrane protein Note=Relocalizes to the immune synapse in T-cells upon activation

Tissue Location

Expressed in a variety of tissues including vascular endothelium and epidermis. Expressed on erythroid cells, with a higher level of expression in erythroid precursors than on mature erythrocytes (PubMed:[15265795](#)). Acts as a sensitive T-cell activation marker (PubMed:[32978478](#)).

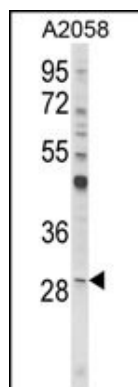
Background

Essential for the proper assembly of the glomerular and tubular basement membranes in kidney.

References

Karamatic Crew V.,et.al., Blood 104:2217-2223(2004).

Images



Western blot analysis of CD151 Antibody (Center) (Cat. #AP8751c) in A2058 cell line lysates (35ug/lane). CD151 (arrow) was detected using the purified Pab.

Please note: All products are 'FOR RESEARCH USE ONLY. NOT FOR USE IN DIAGNOSTIC OR THERAPEUTIC PROCEDURES'.