

ITGBL1 Antibody (Center)

Affinity Purified Rabbit Polyclonal Antibody (Pab)

Catalog # AP8781c

Product Information

Application	WB, IHC-P, FC, E
Primary Accession	O95965
Reactivity	Human, Rat, Mouse
Host	Rabbit
Clonality	Polyclonal
Isotype	Rabbit IgG
Clone Names	RB23638
Calculated MW	53921
Antigen Region	334-360

Additional Information

Gene ID	9358
Other Names	Integrin beta-like protein 1, Osteoblast-specific cysteine-rich protein, Ten integrin EGF-like repeat domain-containing protein, ITGBL1, OSCP, TIED
Target/Specificity	This ITGBL1 antibody is generated from rabbits immunized with a KLH conjugated synthetic peptide between 334-360 amino acids from the Central region of human ITGBL1.
Dilution	WB~~1:1000 IHC-P~~1:100~500 FC~~1:10~50 E~~Use at an assay dependent concentration.
Format	Purified polyclonal antibody supplied in PBS with 0.09% (W/V) sodium azide. This antibody is purified through a protein A column, followed by peptide affinity purification.
Storage	Maintain refrigerated at 2-8°C for up to 2 weeks. For long term storage store at -20°C in small aliquots to prevent freeze-thaw cycles.
Precautions	ITGBL1 Antibody (Center) is for research use only and not for use in diagnostic or therapeutic procedures.

Protein Information

Name	ITGBL1
Synonyms	OSCP, TIED
Cellular Location	Secreted.

Tissue Location

Widely expressed in many tissues, but readily detectable only in aorta.

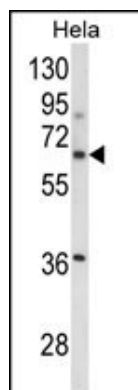
Background

Osteoblast specific cysteine-rich protein (OSCP) is integrin, α like 1 (with EGF-like repeat domains).

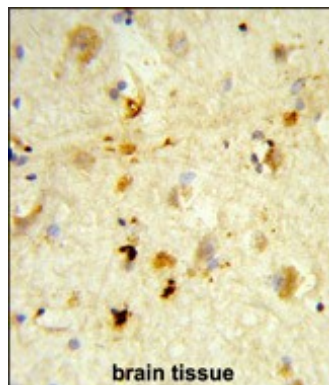
References

Berg R.W., et.al., Genomics 56:169-178(1999).

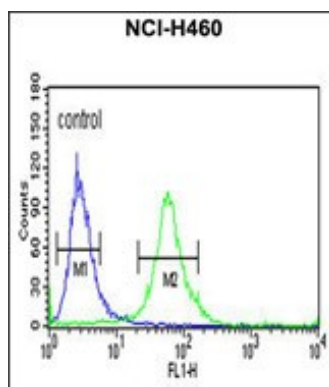
Images



Western blot analysis of ITGBL1 Antibody (Center) (Cat. #AP8781c) in HeLa cell line lysates (35ug/lane). ITGBL1 (arrow) was detected using the purified Pab.



Formalin-fixed and paraffin-embedded human brain tissue reacted with ITGBL1 Antibody (Center), which was peroxidase-conjugated to the secondary antibody, followed by DAB staining. This data demonstrates the use of this antibody for immunohistochemistry; clinical relevance has not been evaluated.



ITGBL1 Antibody (Center) (Cat. #AP8781c) flow cytometric analysis of NCI-H460 cells (right histogram) compared to a negative control cell (left histogram). FITC-conjugated goat-anti-rabbit secondary antibodies were used for the analysis.

Citations

- [Evaluation of the Role of ITGBL1 in Ovarian Cancer](#)

Please note: All products are 'FOR RESEARCH USE ONLY. NOT FOR USE IN DIAGNOSTIC OR THERAPEUTIC PROCEDURES'.