

CD24 Antibody (N-Term)

Affinity Purified Rabbit Polyclonal Antibody (Pab)

Catalog # AP8782a

Product Information

Application	WB, IHC-P, FC, E
Primary Accession	P25063
Other Accession	P24807 , NP_037362
Reactivity	Human
Predicted	Mouse
Host	Rabbit
Clonality	Polyclonal
Isotype	Rabbit IgG
Calculated MW	8083
Antigen Region	1-30

Additional Information

Gene ID	100133941
Other Names	Signal transducer CD24, Small cell lung carcinoma cluster 4 antigen, CD24, CD24, CD24A
Target/Specificity	This CD24 antibody is generated from rabbits immunized with a KLH conjugated synthetic peptide between 1-30 amino acids from the N-terminal region of human CD24.
Dilution	WB~~1:1000 IHC-P~~1:100~500 FC~~1:10~50 E~~Use at an assay dependent concentration.
Format	Purified polyclonal antibody supplied in PBS with 0.05% (V/V) Proclin 300. This antibody is purified through a protein A column, followed by peptide affinity purification.
Storage	Maintain refrigerated at 2-8°C for up to 2 weeks. For long term storage store at -20°C in small aliquots to prevent freeze-thaw cycles.
Precautions	CD24 Antibody (N-Term) is for research use only and not for use in diagnostic or therapeutic procedures.

Protein Information

Name	CD24
Synonyms	CD24A

Function	May have a pivotal role in cell differentiation of different cell types. Signaling could be triggered by the binding of a lectin- like ligand to the CD24 carbohydrates, and transduced by the release of second messengers derived from the GPI-anchor. Modulates B-cell activation responses. Promotes AG-dependent proliferation of B-cells, and prevents their terminal differentiation into antibody-forming cells (PubMed: 11313396). In association with SIGLEC10 may be involved in the selective suppression of the immune response to danger-associated molecular patterns (DAMPs) such as HMGB1, HSP70 and HSP90. Plays a role in the control of autoimmunity (By similarity).
Cellular Location	Cell membrane; Lipid-anchor, GPI-anchor.
Tissue Location	B-cells. Expressed in a number of B-cell lines including P32/ISH and Namalwa. Expressed in erythroleukemia cell and small cell lung carcinoma cell lines. Also expressed on the surface of T-cells.

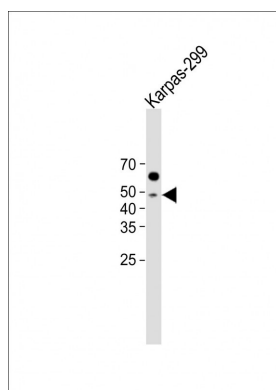
Background

CD24 is a sialoglycoprotein that is expressed on mature granulocytes and in many B cells. This protein is anchored via a glycosyl phosphatidylinositol (GPI) link to the cell surface.

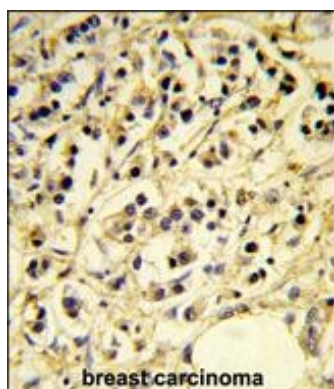
References

Kay,R., et.al., J. Immunol. 147 (4), 1412-1416 (1991)

Images

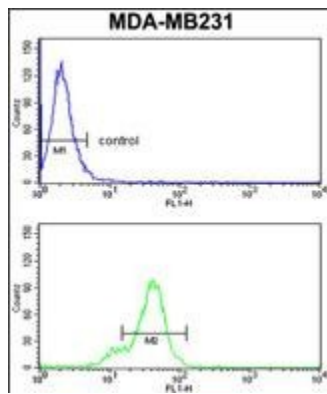


All lanes: Anti-CD24 Antibody (N-Term) at 1:500 dilution + Karpas-299 whole cell lysate Lysates/proteins at 20 µg per lane. Secondary: Goat Anti-Rabbit IgG, (H+L), Peroxidase conjugated (ASP1615) at 1/15000 dilution. Observed band size: 42 KDa Blocking/Dilution buffer: 5% NFDM/TBST.



Formalin-fixed and paraffin-embedded human breast carcinoma reacted with CD24 Antibody (N-Term), which was peroxidase-conjugated to the secondary antibody, followed by DAB staining. This data demonstrates the use of this antibody for immunohistochemistry; clinical relevance has not been evaluated.

CD24 Antibody (N-Term) (Cat.#AP8782a) flow cytometry analysis of MDA-MB231 cells (bottom histogram) compared to a negative control cell (top histogram). FITC-conjugated goat-anti-rabbit secondary antibodies



were used for the analysis.

Please note: All products are 'FOR RESEARCH USE ONLY. NOT FOR USE IN DIAGNOSTIC OR THERAPEUTIC PROCEDURES'.