

RASL11B Antibody (N-term)

Purified Rabbit Polyclonal Antibody (Pab)

Catalog # AP8789a

Product Information

Application	WB, FC, E
Primary Accession	Q9BPW5
Other Accession	Q8AVS6 , Q6IMA7 , Q922H7 , Q5E9J3
Reactivity	Human
Predicted	Bovine, Mouse, Rat, Xenopus
Host	Rabbit
Clonality	Polyclonal
Isotype	Rabbit IgG
Clone Names	RB17234
Calculated MW	27508
Antigen Region	37-66

Additional Information

Gene ID	65997
Other Names	Ras-like protein family member 11B, RASL11B {ECO:0000312 EMBL:AAH018461}
Target/Specificity	This RASL11B antibody is generated from rabbits immunized with a KLH conjugated synthetic peptide between 37-66 amino acids from the N-terminal region of human RASL11B.
Dilution	WB~~1:1000 FC~~1:10~50 E~~Use at an assay dependent concentration.
Format	Purified polyclonal antibody supplied in PBS with 0.09% (W/V) sodium azide. This antibody is prepared by Saturated Ammonium Sulfate (SAS) precipitation followed by dialysis against PBS.
Storage	Maintain refrigerated at 2-8°C for up to 2 weeks. For long term storage store at -20°C in small aliquots to prevent freeze-thaw cycles.
Precautions	RASL11B Antibody (N-term) is for research use only and not for use in diagnostic or therapeutic procedures.

Protein Information

Name	RASL11B {ECO:0000312 EMBL:AAH01846.1}
Tissue Location	Widely expressed with highest levels in placenta and primary macrophages.

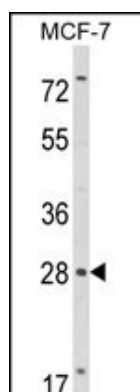
Background

RASL11B may play a role in TGF-beta1-mediated developmental processes & in pathophysiologies such as inflammation, cancer and arteriosclerosis.

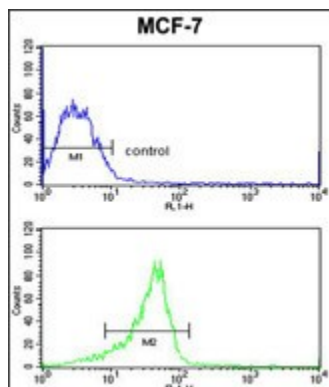
References

Louro R., et.al., Biochem. Biophys. Res. Commun. 316:618-627(2004).

Images



Western blot analysis of RASL11B Antibody (N-term) (Cat. #AP8789a) in MCF-7 cell line lysates (35ug/lane). RASL11B (arrow) was detected using the purified Pab.



RASL11B Antibody (N-term) (Cat. #AP8789a) flow cytometric analysis of MCF-7 cells (bottom histogram) compared to a negative control cell (top histogram). FITC-conjugated goat-anti-rabbit secondary antibodies were used for the analysis.

Please note: All products are 'FOR RESEARCH USE ONLY. NOT FOR USE IN DIAGNOSTIC OR THERAPEUTIC PROCEDURES'.