

# SOCS1 Antibody (N-term)

Purified Rabbit Polyclonal Antibody (Pab)

Catalog # AP8790A

## Product Information

---

<b>Application</b>	WB, IHC-P, IF, FC, E
<b>Primary Accession</b>	<a href="#">O15524</a>
<b>Reactivity</b>	Human, Rat, Mouse
<b>Host</b>	Rabbit
<b>Clonality</b>	Polyclonal
<b>Isotype</b>	Rabbit IgG
<b>Calculated MW</b>	23551
<b>Antigen Region</b>	35-66

## Additional Information

---

<b>Gene ID</b>	8651
<b>Other Names</b>	Suppressor of cytokine signaling 1, SOCS-1, JAK-binding protein, JAB, STAT-induced STAT inhibitor 1, SSI-1, Tec-interacting protein 3, TIP-3, SOCS1, SSI1, TIP3
<b>Target/Specificity</b>	This SOCS1 antibody is generated from rabbits immunized with a KLH conjugated synthetic peptide between 35-66 amino acids from the N-terminal region of human SOCS1.
<b>Dilution</b>	WB~~1:1000 IHC-P~~1:100~500 IF~~1:10~50 FC~~1:10~50 E~~Use at an assay dependent concentration.
<b>Format</b>	Purified polyclonal antibody supplied in PBS with 0.09% (W/V) sodium azide. This antibody is prepared by Saturated Ammonium Sulfate (SAS) precipitation followed by dialysis against PBS.
<b>Storage</b>	Maintain refrigerated at 2-8°C for up to 2 weeks. For long term storage store at -20°C in small aliquots to prevent freeze-thaw cycles.
<b>Precautions</b>	SOCS1 Antibody (N-term) is for research use only and not for use in diagnostic or therapeutic procedures.

## Protein Information

---

<b>Name</b>	SOCS1
<b>Synonyms</b>	SSI1, TIP3 {ECO:0000303   PubMed:9341160}
<b>Function</b>	Essential negative regulator of type I and type II interferon (IFN) signaling,

as well as that of other cytokines, including IL2, IL4, IL6 and leukemia inhibitory factor (LIF) (PubMed:[32499645](#), PubMed:[33087723](#)). Downregulates cytokine signaling by inhibiting the JAK/STAT signaling pathway. Acts by binding to JAK proteins and to IFNGR1 and inhibiting their kinase activity. In vitro, suppresses Tec protein-tyrosine activity (PubMed:[9341160](#)). Regulates IFN-gamma (IFNG)- mediated sensory neuron survival (By similarity). Probable substrate recognition component of an ECS (Elongin BC-CUL2/5-SOCS-box protein) E3 ubiquitin ligase complex which mediates the ubiquitination and subsequent proteasomal degradation of target proteins (PubMed:[11278610](#), PubMed:[11313480](#)).

Cellular Location	Nucleus. Cytoplasmic vesicle. Note=Detected in perinuclear cytoplasmic vesicles upon interaction with FGFR3
Tissue Location	Expressed in all tissues with high expression in spleen, small intestine and peripheral blood leukocytes

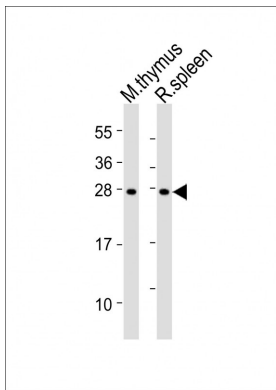
## Background

SOCS1 is a member of the STAT-induced STAT inhibitor (SSI), also known as suppressor of cytokine signaling(SOCS), family. SSI family members are cytokine-inducible negative regulators of cytokine signaling.

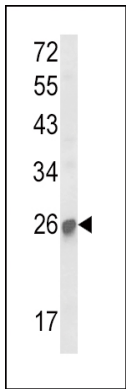
## References

Starr,R.,et.al., Nature 387 (6636), 917-921 (1997) Minamoto,S., et.al., Biochem. Biophys. Res. Commun. 237 (1), 79-83 (1997)

## Images

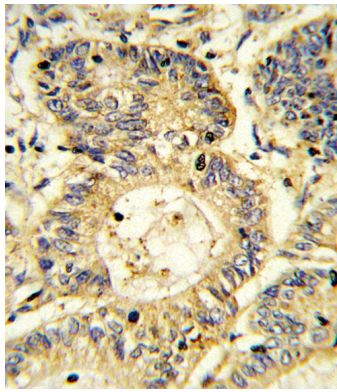


All lanes : Anti-SOCS1 Antibody (N-term) at 1:2000 dilution Lane 1: mouse thymus lysates Lane 2: rat spleen lysates Lysates/proteins at 20 µg per lane. Secondary Goat Anti-Rabbit IgG, (H+L), Peroxidase conjugated at 1/10000 dilution Predicted band size : 24 kDa Blocking/Dilution buffer: 5% NFDm/TBST.

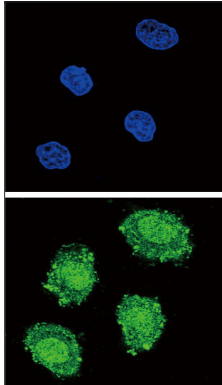


Western blot analysis of SOCS1 Antibody (N-term) (Cat. #AP8790a) in mouse kidney tissue lysates (35ug/lane). SOCS1 (arrow) was detected using the purified Pab.

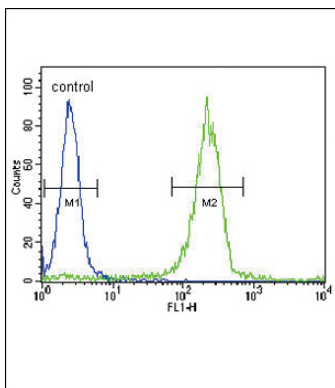
Formalin-fixed and paraffin-embedded human colon carcinoma reacted with SOCS1 Antibody (N-term), which



was peroxidase-conjugated to the secondary antibody, followed by DAB staining. This data demonstrates the use of this antibody for immunohistochemistry; clinical relevance has not been evaluated.



Confocal immunofluorescent analysis of SOCS1 Antibody (N-term) (Cat. #AP8790a) with 293 cell followed by Alexa Fluor 488-conjugated goat anti-rabbit IgG (green). DAPI was used to stain the cell nuclear (blue).



SOCS1 Antibody (N-term) (Cat. #AP8790a) flow cytometric analysis of WiDr cells (right histogram) compared to a negative control cell (left histogram). FITC-conjugated goat-anti-rabbit secondary antibodies were used for the analysis.

Please note: All products are 'FOR RESEARCH USE ONLY. NOT FOR USE IN DIAGNOSTIC OR THERAPEUTIC PROCEDURES'.