

IL1RAPL2 Antibody (Center)

Affinity Purified Rabbit Polyclonal Antibody (Pab)

Catalog # AP8817c

Product Information

Application	WB, FC, E
Primary Accession	Q9NP60
Reactivity	Human, Mouse
Host	Rabbit
Clonality	Polyclonal
Isotype	Rabbit IgG
Clone Names	RB23483
Calculated MW	78670
Antigen Region	372-401

Additional Information

Gene ID	26280
Other Names	X-linked interleukin-1 receptor accessory protein-like 2, IL-1 receptor accessory protein-like 2, IL-1-RAPL-2, IL-1RAPL-2, IL1RAPL-2, IL1RAPL-2-related protein, Interleukin-1 receptor 9, IL-1R-9, IL-1R9, Three immunoglobulin domain-containing IL-1 receptor-related 1, TIGIRR-1, IL1RAPL2, IL1R9
Target/Specificity	This IL1RAPL2 antibody is generated from rabbits immunized with a KLH conjugated synthetic peptide between 372-401 amino acids from the Central region of human IL1RAPL2.
Dilution	WB~~1:1000 FC~~1:10~50 E~~Use at an assay dependent concentration.
Format	Purified polyclonal antibody supplied in PBS with 0.09% (W/V) sodium azide. This antibody is purified through a protein A column, followed by peptide affinity purification.
Storage	Maintain refrigerated at 2-8°C for up to 2 weeks. For long term storage store at -20°C in small aliquots to prevent freeze-thaw cycles.
Precautions	IL1RAPL2 Antibody (Center) is for research use only and not for use in diagnostic or therapeutic procedures.

Protein Information

Name	IL1RAPL2
Synonyms	IL1R9

Cellular Location

Membrane; Single-pass type I membrane protein.

Tissue Location

Detected at low levels in fetal and adult brain, in particular in the frontal lobe, temporal lobe and cerebellum. Detected at very low levels in skin, liver, fetal ovary and in placenta

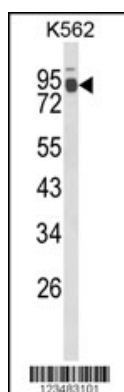
Background

IL1RAPL2 is a member of the interleukin 1 receptor family. This protein is similar to the interleukin 1 accessory proteins, and is most closely related to interleukin 1 receptor accessory protein-like 1 (IL1RAPL1).

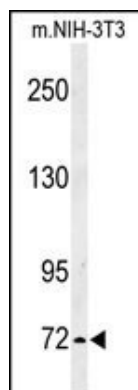
References

Born,T.L.,et.al., J. Biol. Chem. 275 (39), 29946-29954 (2000)

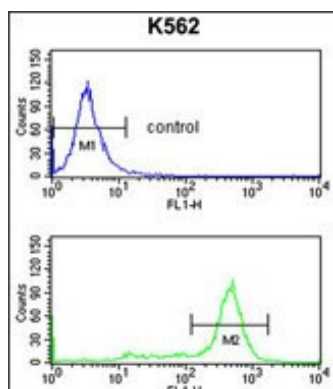
Ferrante,M.I., et.al., Gene 275 (2), 217-221 (2001)

Images

Western blot analysis of IL1RAPL2 Antibody (Center) (Cat. #AP8817c) in K562 cell line lysates (35ug/lane). IL1RAPL2 (arrow) was detected using the purified Pab.



Western blot analysis of IL1RAPL2 Antibody (Center) (Cat. #AP8817c) in mouse NIH-3T3 cell line lysates (35ug/lane). IL1RAPL2 (arrow) was detected using the purified Pab.



IL1RAPL2 Antibody (Center) (Cat. #AP8817c) flow cytometry analysis of K562 cells (bottom histogram) compared to a negative control cell (top histogram). FITC-conjugated goat-anti-rabbit secondary antibodies were used for the analysis.

Please note: All products are 'FOR RESEARCH USE ONLY. NOT FOR USE IN DIAGNOSTIC OR THERAPEUTIC PROCEDURES'.