

# CANT1 Antibody (N-term)

Affinity Purified Rabbit Polyclonal Antibody (Pab)  
Catalog # AP8822a

## Product Information

---

<b>Application</b>	WB, FC, E
<b>Primary Accession</b>	<a href="#">Q8WVQ1</a>
<b>Reactivity</b>	Human
<b>Host</b>	Rabbit
<b>Clonality</b>	Polyclonal
<b>Isotype</b>	Rabbit IgG
<b>Clone Names</b>	RB23532
<b>Calculated MW</b>	44840
<b>Antigen Region</b>	1-30

## Additional Information

---

<b>Gene ID</b>	124583
<b>Other Names</b>	Soluble calcium-activated nucleotidase 1, SCAN-1, Apyrase homolog, Putative MAPK-activating protein PM09, Putative NF-kappa-B-activating protein 107, CANT1, SHAPY
<b>Target/Specificity</b>	This CANT1 antibody is generated from rabbits immunized with a KLH conjugated synthetic peptide between 1-30 amino acids from the N-terminal region of human CANT1.
<b>Dilution</b>	WB~~1:1000 FC~~1:10~50 E~~Use at an assay dependent concentration.
<b>Format</b>	Purified polyclonal antibody supplied in PBS with 0.09% (W/V) sodium azide. This antibody is purified through a protein A column, followed by peptide affinity purification.
<b>Storage</b>	Maintain refrigerated at 2-8°C for up to 2 weeks. For long term storage store at -20°C in small aliquots to prevent freeze-thaw cycles.
<b>Precautions</b>	CANT1 Antibody (N-term) is for research use only and not for use in diagnostic or therapeutic procedures.

## Protein Information

---

<b>Name</b>	CANT1
<b>Synonyms</b>	SHAPY
<b>Function</b>	Calcium-dependent nucleotidase with a preference for UDP. The order of

activity with different substrates is UDP > GDP > UTP > GTP. Has very low activity towards ADP and even lower activity towards ATP. Does not hydrolyze AMP and GMP (PubMed:[12234496](#), PubMed:[15006348](#), PubMed:[15248776](#), PubMed:[16835225](#)). Involved in proteoglycan synthesis (PubMed:[22539336](#)).

#### Cellular Location

Endoplasmic reticulum membrane; Single-pass type II membrane protein. Golgi apparatus, Golgi stack membrane; Single-pass type II membrane protein. Cell membrane. Note=Processed form: Secreted

#### Tissue Location

Widely expressed..

### Background

---

CANT1 belongs to the apyrase family. It functions as a calcium-dependent nucleotidase with a preference for UDP.

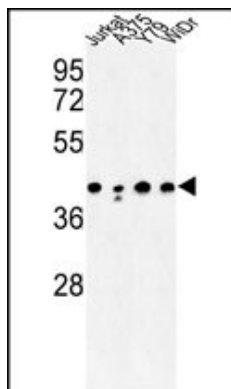
### References

---

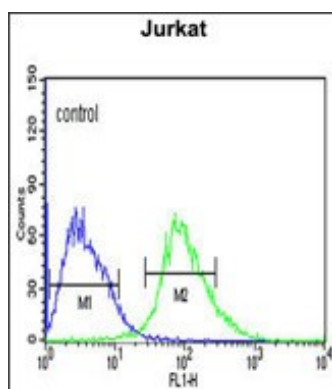
Dai,J., et.al., Cell 116 (5), 649-659 (2004)

### Images

---



Western blot analysis of CANT1 Antibody (N-term) (Cat. #AP8822a) in Jurkat, A375, Y79, WiDr cell line lysates (35ug/lane). CANT1 (arrow) was detected using the purified Pab.



CANT1 Antibody (N-term) (Cat. #AP8822a) flow cytometric analysis of Jurkat cells (right histogram) compared to a negative control cell (left histogram). FITC-conjugated goat-anti-rabbit secondary antibodies were used for the analysis.

Please note: All products are 'FOR RESEARCH USE ONLY. NOT FOR USE IN DIAGNOSTIC OR THERAPEUTIC PROCEDURES'.