

# RPS8 Antibody (N-term)

Affinity Purified Rabbit Polyclonal Antibody (Pab)

Catalog # AP8831a

## Product Information

---

<b>Application</b>	WB, FC, E
<b>Primary Accession</b>	<a href="#">P62241</a>
<b>Other Accession</b>	<a href="#">Q7SYU0</a> , <a href="#">P62243</a> , <a href="#">P62242</a> , <a href="#">Q4R6P8</a> , <a href="#">Q5E958</a> , <a href="#">NP_001003</a>
<b>Reactivity</b>	Human, Mouse
<b>Predicted</b>	Bovine, Monkey, Rat, Xenopus
<b>Host</b>	Rabbit
<b>Clonality</b>	Polyclonal
<b>Isotype</b>	Rabbit IgG
<b>Clone Names</b>	RB23630
<b>Calculated MW</b>	24205
<b>Antigen Region</b>	1-28

## Additional Information

---

<b>Gene ID</b>	6202
<b>Other Names</b>	40S ribosomal protein S8, RPS8
<b>Target/Specificity</b>	This RPS8 antibody is generated from rabbits immunized with a KLH conjugated synthetic peptide between 1-28 amino acids from the N-terminal region of human RPS8.
<b>Dilution</b>	WB~~1:1000 FC~~1:10~50 E~~Use at an assay dependent concentration.
<b>Format</b>	Purified polyclonal antibody supplied in PBS with 0.09% (W/V) sodium azide. This antibody is purified through a protein A column, followed by peptide affinity purification.
<b>Storage</b>	Maintain refrigerated at 2-8°C for up to 2 weeks. For long term storage store at -20°C in small aliquots to prevent freeze-thaw cycles.
<b>Precautions</b>	RPS8 Antibody (N-term) is for research use only and not for use in diagnostic or therapeutic procedures.

## Protein Information

---

<b>Name</b>	RPS8 ( <a href="#">HGNC:10441</a> )
<b>Function</b>	Component of the small ribosomal subunit (PubMed: <a href="#">23636399</a> ). The ribosome is a large ribonucleoprotein complex responsible for the synthesis of proteins in the cell (PubMed: <a href="#">23636399</a> ). Part of the small subunit (SSU)

processome, first precursor of the small eukaryotic ribosomal subunit. During the assembly of the SSU processome in the nucleolus, many ribosome biogenesis factors, an RNA chaperone and ribosomal proteins associate with the nascent pre-rRNA and work in concert to generate RNA folding, modifications, rearrangements and cleavage as well as targeted degradation of pre-ribosomal RNA by the RNA exosome (PubMed:[34516797](#)).

#### Cellular Location

Cytoplasm. Membrane; Lipid-anchor. Nucleus, nucleolus. Note=Localized in cytoplasmic mRNP granules containing untranslated mRNAs.

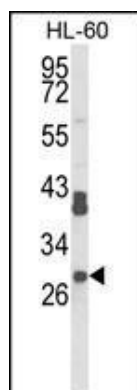
## Background

Ribosomes, the organelles that catalyze protein synthesis, consist of a small 40S subunit and a large 60S subunit. Together these subunits are composed of 4 RNA species and approximately 80 structurally distinct proteins. RPS8 is a ribosomal protein that is a component of the 40S subunit. The protein belongs to the S8E family of ribosomal proteins. It is located in the cytoplasm.

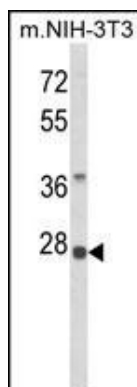
## References

Wool,I.G., et.al., Biochem. Cell Biol. 73 (11-12), 933-947 (1995)

## Images

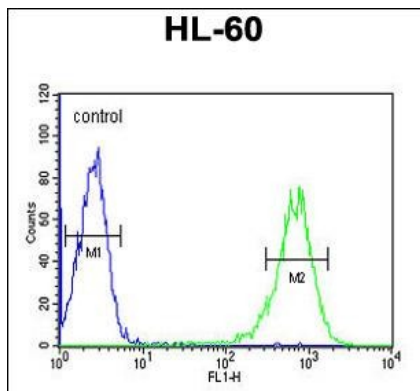


Western blot analysis of RPS8 Antibody (N-term) (Cat. #AP8831a) in HL-60 cell line lysates (35ug/lane). RPS8 (arrow) was detected using the purified Pab.



Western blot analysis of RPS8 Antibody (N-term) (Cat. #AP8831a) in NIH-3T3 cell line lysates (35ug/lane). RPS8 (arrow) was detected using the purified Pab

RPS8 Antibody (N-term) (Cat. #AP8831a) flow cytometric analysis of HL-60 cells (right histogram) compared to a negative control cell (left histogram).FITC-conjugated goat-anti-rabbit secondary antibodies were used for the analysis.



## Citations

---

- [A ribosome-related signature in peripheral blood CLL B cells is linked to reduced survival following treatment.](#)
- [Active regulator of SIRT1 is required for ribosome biogenesis and function.](#)

Please note: All products are 'FOR RESEARCH USE ONLY. NOT FOR USE IN DIAGNOSTIC OR THERAPEUTIC PROCEDURES'.