

DOLK Antibody (Center)

Affinity Purified Rabbit Polyclonal Antibody (Pab)

Catalog # AP8834c

Product Information

Application	WB, IHC-P, FC, E
Primary Accession	Q9UPQ8
Reactivity	Human
Host	Rabbit
Clonality	Polyclonal
Isotype	Rabbit IgG
Clone Names	RB23701
Calculated MW	59268
Antigen Region	312-339

Additional Information

Gene ID	22845
Other Names	Dolichol kinase, Transmembrane protein 15, DOLK, KIAA1094, TMEM15
Target/Specificity	This DOLK antibody is generated from rabbits immunized with a KLH conjugated synthetic peptide between 312-339 amino acids from the Central region of human DOLK.
Dilution	WB~~1:1000 IHC-P~~1:100~500 FC~~1:10~50 E~~Use at an assay dependent concentration.
Format	Purified polyclonal antibody supplied in PBS with 0.09% (W/V) sodium azide. This antibody is purified through a protein A column, followed by peptide affinity purification.
Storage	Maintain refrigerated at 2-8°C for up to 2 weeks. For long term storage store at -20°C in small aliquots to prevent freeze-thaw cycles.
Precautions	DOLK Antibody (Center) is for research use only and not for use in diagnostic or therapeutic procedures.

Protein Information

Name	DOLK
Synonyms	KIAA1094 {ECO:0000303 PubMed:10470851},
Function	Catalyzes CTP-mediated phosphorylation of dolichol, the terminal step in de novo dolichyl monophosphate (Dol-P) biosynthesis (PubMed: 12213788 ,

PubMed:[16923818](#), PubMed:[17273964](#), PubMed:[22242004](#)). Dol-P is a lipid carrier essential for the synthesis of N-linked and O-linked oligosaccharides and for GPI anchors (PubMed:[12213788](#)).

Cellular Location	Endoplasmic reticulum membrane; Multi-pass membrane protein
Tissue Location	Ubiquitous..

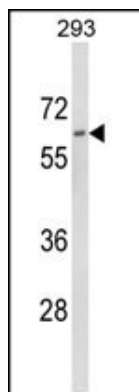
Background

DOLK is involved in the synthesis of the sugar donor Dol-P-Man which is required in the synthesis of N-linked and O-linked oligosaccharides and for that of GPI anchors (By similarity).

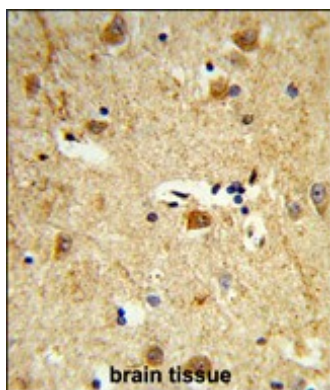
References

Shridas,P. et.al., J. Biol. Chem. 281 (42), 31696-31704 (2006)

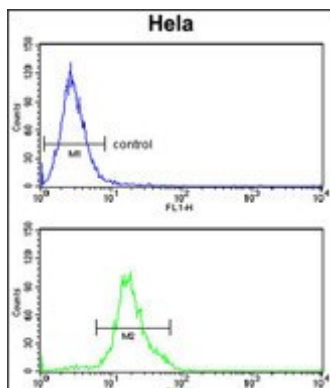
Images



Western blot analysis of DOLK Antibody (Center) (Cat. #AP8834c) in 293 cell line lysates (35ug/lane). DOLK (arrow) was detected using the purified Pab.



Formalin-fixed and paraffin-embedded human brain tissue reacted with DOLK Antibody (Center), which was peroxidase-conjugated to the secondary antibody, followed by DAB staining. This data demonstrates the use of this antibody for immunohistochemistry; clinical relevance has not been evaluated.



DOLK Antibody (Center) (Cat. #AP8834c) flow cytometry analysis of HeLa cells (bottom histogram) compared to a negative control cell (top histogram). FITC-conjugated goat-anti-rabbit secondary antibodies were used for the analysis.

Please note: All products are 'FOR RESEARCH USE ONLY. NOT FOR USE IN DIAGNOSTIC OR THERAPEUTIC PROCEDURES'.