

RPGRIP1 Antibody (Center)

Affinity Purified Rabbit Polyclonal Antibody (Pab)

Catalog # AP8871c

Product Information

Application	WB, IHC-P, FC, E
Primary Accession	Q96KN7
Other Accession	NP_065099
Reactivity	Human
Host	Rabbit
Clonality	Polyclonal
Isotype	Rabbit IgG
Clone Names	RB23627
Calculated MW	146682
Antigen Region	530-557

Additional Information

Gene ID	57096
Other Names	X-linked retinitis pigmentosa GTPase regulator-interacting protein 1, RPGR-interacting protein 1, RPGRIP1
Target/Specificity	This RPGRIP1 antibody is generated from rabbits immunized with a KLH conjugated synthetic peptide between 530-557 amino acids from the Central region of human RPGRIP1.
Dilution	WB~~1:1000 IHC-P~~1:100~500 FC~~1:10~50 E~~Use at an assay dependent concentration.
Format	Purified polyclonal antibody supplied in PBS with 0.09% (W/V) sodium azide. This antibody is purified through a protein A column, followed by peptide affinity purification.
Storage	Maintain refrigerated at 2-8°C for up to 2 weeks. For long term storage store at -20°C in small aliquots to prevent freeze-thaw cycles.
Precautions	RPGRIP1 Antibody (Center) is for research use only and not for use in diagnostic or therapeutic procedures.

Protein Information

Name	RPGRIP1
Function	May function as scaffolding protein. Required for normal location of RPGR at the connecting cilium of photoreceptor cells. Required for normal disk

morphogenesis and disk organization in the outer segment of photoreceptor cells and for survival of photoreceptor cells.

Cellular Location

Cell projection, cilium. Note=Situated between the axonemal microtubules and the plasma membrane (By similarity). In the retinal photoreceptor cell layer, localizes at the connecting cilium, a thin bridge linking the cell body and the light-sensing outer segment (By similarity). Colocalizes with RGPR in the photoreceptor connecting cilium (By similarity).
{ECO:0000250|UniProtKB:Q9EPQ2}

Tissue Location

Strong expression in retina, with weaker expression in testis. Expressed in other neurons such as amacrine cells Colocalizes with RGPR in the outer segment of rod photoreceptors and cone outer segments.

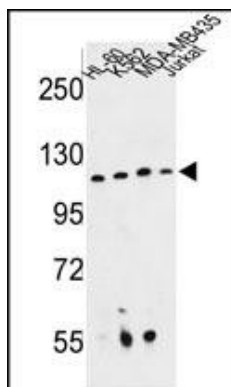
Background

RPGRIP1 is a photoreceptor protein that interacts with retinitis pigmentosa GTPase regulator protein and is a key component of cone and rod photoreceptor cells.

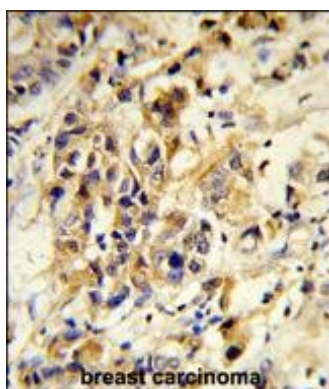
References

Arts,H.H.,et.al., Nat. Genet. 39 (7), 882-888 (2007)

Images

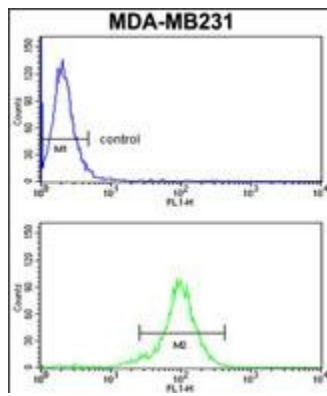


Western blot analysis of RPGRIP1 Antibody (Center) (Cat. #AP8871c) in HL-60, K562, MDA-MB435, Jurkat cell line lysates (35ug/lane). RPGRIP1 (arrow) was detected using the purified Pab.



Formalin-fixed and paraffin-embedded human breast carcinoma reacted with RPGRIP1 Antibody (Center), which was peroxidase-conjugated to the secondary antibody, followed by DAB staining. This data demonstrates the use of this antibody for immunohistochemistry; clinical relevance has not been evaluated.

RPGRIP1 Antibody (Center) (Cat.#AP8871c) flow cytometry analysis of MDA-MB231 cells (bottom histogram) compared to a negative control cell (top histogram). FITC-conjugated goat-anti-rabbit secondary antibodies were used for the analysis.



Please note: All products are 'FOR RESEARCH USE ONLY. NOT FOR USE IN DIAGNOSTIC OR THERAPEUTIC PROCEDURES'.