

# C1QTNF6 Antibody (N-term)

Affinity Purified Rabbit Polyclonal Antibody (Pab)

Catalog # AP8883a

## Product Information

---

<b>Application</b>	IHC-P, WB, E
<b>Primary Accession</b>	<a href="#">Q9BXI9</a>
<b>Reactivity</b>	Human
<b>Host</b>	Rabbit
<b>Clonality</b>	Polyclonal
<b>Isotype</b>	Rabbit IgG
<b>Clone Names</b>	RB21316
<b>Calculated MW</b>	30861
<b>Antigen Region</b>	27-53

## Additional Information

---

<b>Gene ID</b>	114904
<b>Other Names</b>	Complement C1q tumor necrosis factor-related protein 6, C1QTNF6, CTRP6
<b>Target/Specificity</b>	This C1QTNF6 antibody is generated from rabbits immunized with a KLH conjugated synthetic peptide between 27-53 amino acids from the N-terminal region of human C1QTNF6.
<b>Dilution</b>	IHC-P~~1:100~500 WB~~1:1000 E~~Use at an assay dependent concentration.
<b>Format</b>	Purified polyclonal antibody supplied in PBS with 0.09% (W/V) sodium azide. This antibody is purified through a protein A column, followed by peptide affinity purification.
<b>Storage</b>	Maintain refrigerated at 2-8°C for up to 2 weeks. For long term storage store at -20°C in small aliquots to prevent freeze-thaw cycles.
<b>Precautions</b>	C1QTNF6 Antibody (N-term) is for research use only and not for use in diagnostic or therapeutic procedures.

## Protein Information

---

<b>Name</b>	C1QTNF6
<b>Synonyms</b>	CTRP6
<b>Cellular Location</b>	Secreted.

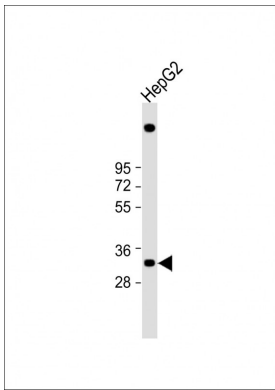
## Background

CTRP6 is an adipokine. It contains at least 4 glycosylation motifs, suggesting that it may be highly post-translationally modified. Unlike adiponectin, which is expressed exclusively by differentiated adipocytes, the CTRPs are expressed in a wide variety of tissues. These proteins are thought to act mainly on liver and muscle tissue to control glucose and lipid metabolism.

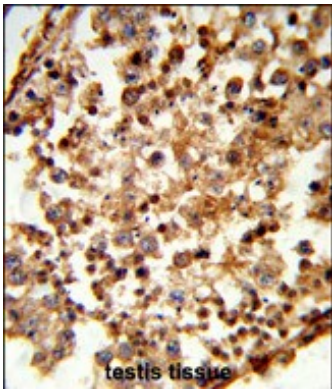
## References

Cooper,J.D., et.al., Nat. Genet. 40 (12), 1399-1401 (2008)  
Zhang,Z.et.al., Protein Sci. 13 (10), 2819-2824 (2004)

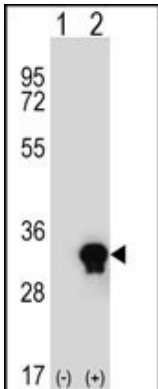
## Images



Anti-C1QTNF6 Antibody (N-term) at 1:1000 dilution + HepG2 whole cell lysate Lysates/proteins at 20 µg per lane. Secondary Goat Anti-Rabbit IgG, (H+L), Peroxidase conjugated at 1/10000 dilution. Predicted band size : 29 kDa Blocking/Dilution buffer: 5% NFDM/TBST.



Formalin-fixed and paraffin-embedded human testis tissue reacted with C1QTNF6 Antibody (N-term), which was peroxidase-conjugated to the secondary antibody, followed by DAB staining. This data demonstrates the use of this antibody for immunohistochemistry; clinical relevance has not been evaluated.



Western blot analysis of C1QTNF6 (arrow) using rabbit polyclonal C1QTNF6 Antibody (N-term) (Cat. #AP8883a). 293 cell lysates (2 ug/lane) either nontransfected (Lane 1) or transiently transfected (Lane 2) with the C1QTNF6 gene.

Please note: All products are 'FOR RESEARCH USE ONLY. NOT FOR USE IN DIAGNOSTIC OR THERAPEUTIC PROCEDURES'.