

# CLN5 Antibody (N-term)

Affinity Purified Rabbit Polyclonal Antibody (Pab)

Catalog # AP8914a

## Product Information

---

Application	WB, E
Primary Accession	<a href="#">O75503</a>
Reactivity	Human
Host	Rabbit
Clonality	Polyclonal
Isotype	Rabbit IgG
Clone Names	RB23453
Calculated MW	41497
Antigen Region	41-69

## Additional Information

---

Gene ID	1203
Other Names	Ceroid-lipofuscinosis neuronal protein 5, Protein CLN5, CLN5
Target/Specificity	This CLN5 antibody is generated from rabbits immunized with a KLH conjugated synthetic peptide between 41-69 amino acids from the N-terminal region of human CLN5.
Dilution	WB~~1:1000 E~~Use at an assay dependent concentration.
Format	Purified polyclonal antibody supplied in PBS with 0.09% (W/V) sodium azide. This antibody is purified through a protein A column, followed by peptide affinity purification.
Storage	Maintain refrigerated at 2-8°C for up to 2 weeks. For long term storage store at -20°C in small aliquots to prevent freeze-thaw cycles.
Precautions	CLN5 Antibody (N-term) is for research use only and not for use in diagnostic or therapeutic procedures.

## Protein Information

---

Name	CLN5
Synonyms	BMPS {ECO:0000303   PubMed:37708259}
Function	[Bis(monoacylglycero)phosphate synthase CLN5, secreted form]: Catalyzes the synthesis of bis(monoacylglycero)phosphate (BMP) via transacylation of 2 molecules of lysophosphatidylglycerol (LPG) (PubMed: <a href="#">37708259</a> ). BMP also

known as lysobisphosphatidic acid plays a key role in the formation of intraluminal vesicles and in maintaining intracellular cholesterol homeostasis (PubMed:[37708259](#)). Can use only LPG as the exclusive lysophospholipid acyl donor for base exchange and displays BMP synthase activity towards various LPGs (LPG 14:0, LPG 16:0, LPG 18:0, LPG 18:1) with a higher preference for longer chain lengths (PubMed:[37708259](#)). Plays a role in influencing the retrograde trafficking of lysosomal sorting receptors SORT1 and IGF2R from the endosomes to the trans-Golgi network by controlling the recruitment of retromer complex to the endosomal membrane (PubMed:[22431521](#)). Regulates the localization and activation of RAB7A which is required to recruit the retromer complex to the endosomal membrane (PubMed:[22431521](#)).

**Cellular Location**

[Bis(monoacylglycero)phosphate synthase CLN5, secreted form]: Lysosome

**Tissue Location**

Ubiquitous..

## Background

---

CLN5 responsible likely is involved in the degradation of post-translationally modified proteins in lysosomes.

## References

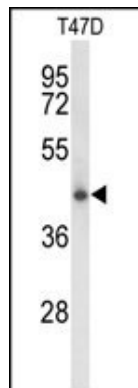
---

Savukoski,M., et.al., Am. J. Hum. Genet. 55 (4), 695-701 (1994)

Mole,S.E., et.al., Hum. Mutat. 14 (3), 199-215 (1999)

## Images

---



Western blot analysis of CLN5 Antibody (N-term) (Cat. #AP8914a) in T47D cell line lysates (35ug/lane).CLN5 (arrow) was detected using the purified Pab.

Please note: All products are 'FOR RESEARCH USE ONLY. NOT FOR USE IN DIAGNOSTIC OR THERAPEUTIC PROCEDURES'.