

HLA-G Antibody (Center)

Affinity Purified Rabbit Polyclonal Antibody (Pab)
Catalog # AP8941c

Product Information

Application	IHC-P-Leica, FC, WB, E
Primary Accession	P17693
Reactivity	Human
Host	Rabbit
Clonality	Polyclonal
Isotype	Rabbit IgG
Calculated MW	38224
Antigen Region	62-89

Additional Information

Gene ID	3135
Other Names	HLA class I histocompatibility antigen, alpha chain G, HLA G antigen, MHC class I antigen G, HLA-G, HLA-60, HLAG
Target/Specificity	This HLA-G antibody is generated from rabbits immunized with a KLH conjugated synthetic peptide between 62-89 amino acids from the Central region of human HLA-G.
Dilution	IHC-P-Leica~~1:500 FC~~1:25 WB~~1:1000 E~~Use at an assay dependent concentration.
Format	Purified polyclonal antibody supplied in PBS with 0.09% (W/V) sodium azide. This antibody is purified through a protein A column, followed by peptide affinity purification.
Storage	Maintain refrigerated at 2-8°C for up to 2 weeks. For long term storage store at -20°C in small aliquots to prevent freeze-thaw cycles.
Precautions	HLA-G Antibody (Center) is for research use only and not for use in diagnostic or therapeutic procedures.

Protein Information

Name	HLA-G {ECO:0000303 PubMed:1570318, ECO:0000312 HGNC:HGNC:4964}
Function	[Isoform 1]: Non-classical major histocompatibility class Ib molecule involved in immune regulatory processes at the maternal-fetal interface (PubMed: 19304799 , PubMed: 23184984 , PubMed: 29262349). In complex with B2M/beta-2 microglobulin binds a limited repertoire of nonamer self-peptides

derived from intracellular proteins including histones and ribosomal proteins (PubMed:[7584149](#), PubMed:[8805247](#)). Peptide-bound HLA-G-B2M complex acts as a ligand for inhibitory/activating KIR2DL4, LILRB1 and LILRB2 receptors on uterine immune cells to promote fetal development while maintaining maternal- fetal tolerance (PubMed:[16366734](#), PubMed:[19304799](#), PubMed:[20448110](#), PubMed:[23184984](#), PubMed:[27859042](#), PubMed:[29262349](#)). Upon interaction with KIR2DL4 and LILRB1 receptors on decidual NK cells, it triggers NK cell senescence-associated secretory phenotype as a molecular switch to promote vascular remodeling and fetal growth in early pregnancy (PubMed:[16366734](#), PubMed:[19304799](#), PubMed:[23184984](#), PubMed:[29262349](#)). Through interaction with KIR2DL4 receptor on decidual macrophages induces pro-inflammatory cytokine production mainly associated with tissue remodeling (PubMed:[19304799](#)). Through interaction with LILRB2 receptor triggers differentiation of type 1 regulatory T cells and myeloid-derived suppressor cells, both of which actively maintain maternal-fetal tolerance (PubMed:[20448110](#), PubMed:[27859042](#)). May play a role in balancing tolerance and antiviral-immunity at maternal-fetal interface by keeping in check the effector functions of NK, CD8+ T cells and B cells (PubMed:[10190900](#), PubMed:[11290782](#), PubMed:[24453251](#)). Reprograms B cells toward an immune suppressive phenotype via LILRB1 (PubMed:[24453251](#)). May induce immune activation/suppression via intercellular membrane transfer (troglodytosis), likely enabling interaction with KIR2DL4, which resides mostly in endosomes (PubMed:[20179272](#), PubMed:[26460007](#)). Through interaction with the inhibitory receptor CD160 on endothelial cells may control angiogenesis in immune privileged sites (PubMed:[16809620](#)).

Cellular Location

[Isoform 1]: Cell membrane; Single-pass type I membrane protein. Endoplasmic reticulum membrane. Early endosome membrane [Isoform 2]: Cell membrane; Single-pass type I membrane protein [Isoform 4]: Cell membrane; Single-pass type I membrane protein [Isoform 6]: Secreted Cell projection, filopodium membrane. Note=HLA-G troglodytosis from extravillous trophoblast's filopodia occurs in the majority of decidual NK cells.

Tissue Location

Expressed in adult eye (PubMed:1570318). Expressed in immune cell subsets including monocytes, myeloid and plasmacytoid dendritic cells and regulatory T cells (Tr1)(at protein level) (PubMed:20448110). Secreted by follicular dendritic cell and follicular helper T cells (PubMed:24453251) [Isoform 7]: Expressed in placenta, amniotic membrane, skin, cord blood and peripheral blood mononuclear cells

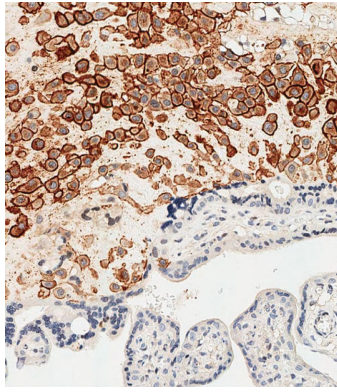
Background

HLA-G belongs to the HLA class I heavy chain paralogues. This class I molecule is a heterodimer consisting of a heavy chain and a light chain (beta-2 microglobulin). The heavy chain is anchored in the membrane. HLA-G is expressed on fetal derived placental cells. The heavy chain is approximately 45 kDa and its gene contains 8 exons. Exon one encodes the leader peptide, exons 2 and 3 encode the alpha1 and alpha2 domain, which both bind the peptide, exon 4 encodes the alpha3 domain, exon 5 encodes the transmembrane region, and exon 6 encodes the cytoplasmic tail.

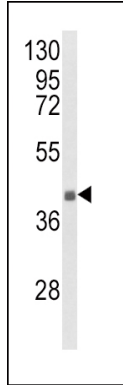
References

- Walpole,N.G., et.al., J. Mol. Biol. 397 (2), 467-480 (2010)
Tian,W., et.sl., Tissue Antigens 75 (3), 227-234 (2010)

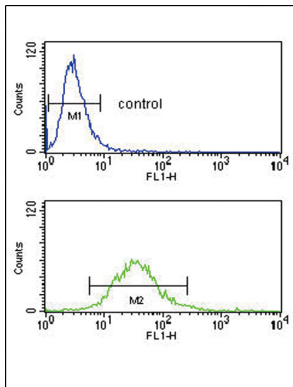
Images



Immunohistochemical analysis of paraffin-embedded Human placenta tissue using AP8941c performed on the Leica® BOND RXm. Tissue was fixed with formaldehyde at room temperature, antigen retrieval was by heat mediation with a EDTA buffer (pH9. 0). Samples were incubated with primary antibody(1:500) for 1 hours at room temperature. A undiluted biotinylated CRF Anti-Polyvalent HRP Polymer antibody was used as the secondary antibody.



Western blot analysis of HLA-G Antibody (Center) (Cat. #AP8941c) in NCI-H460 cell line lysates (35ug/lane). HLA-G (arrow) was detected using the purified Pab.



HLA-G Antibody (Center) (Cat. #AP8941c) flow cytometry analysis of NCI-H460 cells (bottom histogram) compared to a negative control cell (top histogram).FITC-conjugated goat-anti-rabbit secondary antibodies were used for the analysis.

Citations

- [microRNA-210/ Long non-coding RNA MEG3 axis inhibits trophoblast cell migration and invasion by suppressing EMT process](#)
- [PFKFB3 regulates lipopolysaccharide-induced excessive inflammation and cellular dysfunction in HTR-8/SVneo cells: Implications for the role of PFKFB3 in preeclampsia](#)
- [MicroRNA-210 regulates human trophoblast cell line HTR-8/SVneo function by attenuating Notch1 expression: Implications for the role of microRNA-210 in pre-eclampsia.](#)
- [LncRNA MEG3 inhibits trophoblast invasion and trophoblast-mediated VSMC loss in uterine spiral artery remodeling.](#)
- [EPHB4 Regulates Human Trophoblast Cell Line HTR-8/SVneo Function: Implications for the Role of EPHB4 in Preeclampsia.](#)

Please note: All products are 'FOR RESEARCH USE ONLY. NOT FOR USE IN DIAGNOSTIC OR THERAPEUTIC PROCEDURES'.