

C14orf50 Antibody (N-term)

Affinity Purified Rabbit Polyclonal Antibody (Pab)

Catalog # AP8981a

Product Information

Application	WB, E
Primary Accession	Q96LQ0
Reactivity	Human
Host	Rabbit
Clonality	Polyclonal
Isotype	Rabbit IgG
Clone Names	RB23067
Calculated MW	49440
Antigen Region	20-47

Additional Information

Gene ID	145376
Other Names	Protein phosphatase 1 regulatory subunit 36, PPP1R36, C14orf50
Target/Specificity	This C14orf50 antibody is generated from rabbits immunized with a KLH conjugated synthetic peptide between 20-47 amino acids from the N-terminal region of human C14orf50.
Dilution	WB~~1:1000 E~~Use at an assay dependent concentration.
Format	Purified polyclonal antibody supplied in PBS with 0.09% (W/V) sodium azide. This antibody is purified through a protein A column, followed by peptide affinity purification.
Storage	Maintain refrigerated at 2-8°C for up to 2 weeks. For long term storage store at -20°C in small aliquots to prevent freeze-thaw cycles.
Precautions	C14orf50 Antibody (N-term) is for research use only and not for use in diagnostic or therapeutic procedures.

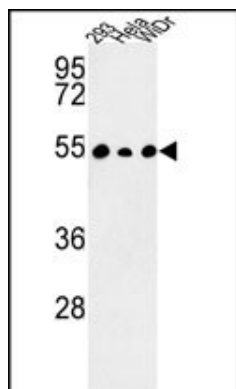
Protein Information

Name	PPP1R36
Synonyms	C14orf50
Function	Inhibits phosphatase activity of protein phosphatase 1 (PP1) complexes.

References

Gerhard,D.S., et.al., Genome Res. 14 (10B), 2121-2127 (2004)

Images



Western blot analysis of C14orf50 Antibody (N-term) (Cat. #AP8981a) in 293, HeLa, WiDr cell line lysates (35ug/lane). C14orf50 (arrow) was detected using the purified Pab.

Please note: All products are 'FOR RESEARCH USE ONLY. NOT FOR USE IN DIAGNOSTIC OR THERAPEUTIC PROCEDURES'.