

C15orf2 Antibody (Center)

Affinity Purified Rabbit Polyclonal Antibody (Pab)

Catalog # AP8982c

Product Information

Application	WB, IHC-P, FC, E
Primary Accession	Q9NZP6
Reactivity	Human
Host	Rabbit
Clonality	Polyclonal
Isotype	Rabbit IgG
Clone Names	RB23068
Calculated MW	120954
Antigen Region	348-377

Additional Information

Gene ID	23742
Other Names	Nuclear pore-associated protein 1, NPAP1, C15orf2
Target/Specificity	This C15orf2 antibody is generated from rabbits immunized with a KLH conjugated synthetic peptide between 348-377 amino acids from the Central region of human C15orf2.
Dilution	WB~~1:1000 IHC-P~~1:100~500 FC~~1:10~50 E~~Use at an assay dependent concentration.
Format	Purified polyclonal antibody supplied in PBS with 0.05% (V/V) Proclin 300. This antibody is purified through a protein A column, followed by peptide affinity purification.
Storage	Maintain refrigerated at 2-8°C for up to 2 weeks. For long term storage store at -20°C in small aliquots to prevent freeze-thaw cycles.
Precautions	C15orf2 Antibody (Center) is for research use only and not for use in diagnostic or therapeutic procedures.

Protein Information

Name	NPAP1
Synonyms	C15orf2
Function	May be involved in spermatogenesis.

Cellular Location

Nucleus, nucleoplasm. Nucleus inner membrane. Note=Colocalizes with the NPC and nuclear lamins at the nuclear periphery

Tissue Location

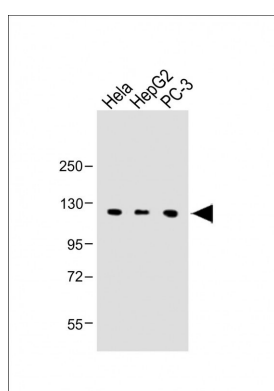
Testis-specific in adults. In fetal brain expressed only from the paternal allele.

Background

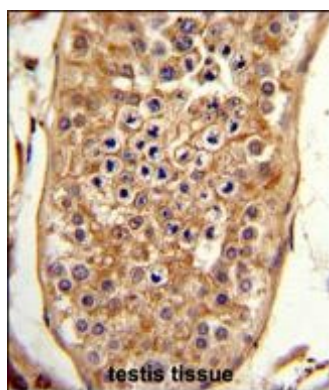
C15orf2 may be involved in spermatogenesis.

References

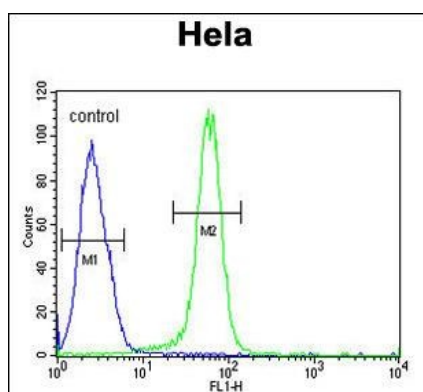
Farber,C., et.al., Genomics 65 (2), 174-183 (2000)

Images

All lanes : Anti-C15orf2 Antibody (Center) at 1:1000 dilution Lane 1: HeLa whole cell lysate Lane 2: HepG2 whole cell lysate Lane 3: PC-3 whole cell lysate Lysates/proteins at 20 µg per lane. Secondary Goat Anti-Rabbit IgG, (H+L), Peroxidase conjugated at 1/10000 dilution. Predicted band size : 121 kDa Blocking/Dilution buffer: 5% NFDM/TBST.



Formalin-fixed and paraffin-embedded human testis tissue reacted with C15orf2 Antibody (Center), which was peroxidase-conjugated to the secondary antibody, followed by DAB staining. This data demonstrates the use of this antibody for immunohistochemistry; clinical relevance has not been evaluated.



C15orf2 Antibody (Center) (Cat. #AP8982c) flow cytometric analysis of HeLa cells (right histogram) compared to a negative control cell (left histogram). FITC-conjugated goat-anti-rabbit secondary antibodies were used for the analysis.

Citations

- [The imprinted NPAP1/C15orf2 gene in the Prader-Willi syndrome region encodes a nuclear pore complex associated protein.](#)

Please note: All products are 'FOR RESEARCH USE ONLY. NOT FOR USE IN DIAGNOSTIC OR THERAPEUTIC PROCEDURES'.