

beta Tubulin Mouse Monoclonal Antibody

Mouse mAb

Catalog # AP90009

Product Information

Application	WB, IHC, IF, ICC, IHF
Primary Accession	P07437
Reactivity	Rat, Human, Mouse, Rabbit, Hamster, Monkey, Chicken, Dog, Sheep
Clonality	Monoclonal
Other Names	Beta 4 tubulin; Beta 5 tubulin; Beta1 tubulin; Tubulin beta chain; Tubulin beta class I;
Isotype	Mouse IgG1
Host	Mouse
Calculated MW	49671

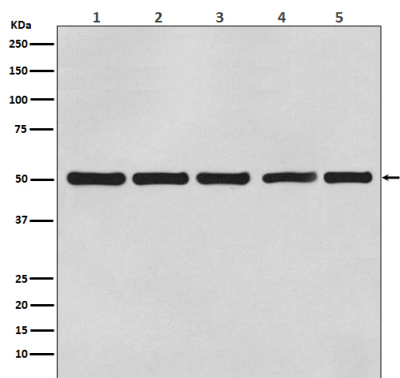
Additional Information

Dilution	WB 1:3000~1:10000 IHC 1:50~1:200 ICC/IF 1:50~1:200
Purification	Affinity-chromatography
Immunogen	A synthesized peptide derived from human beta Tubulin
Description	Tubulin is the major constituent of microtubules. It binds two moles of GTP, one at an exchangeable site on the beta chain and one at a non-exchangeable site on the alpha-chain.
Storage Condition and Buffer	Mouse IgG in phosphate buffered saline , pH 7.4, 150mM NaCl, 0.02% sodium azide and 50% glycerol. Store at +4°C short term. Store at -20°C long term. Avoid freeze / thaw cycle.

Protein Information

Name	TUBB
Synonyms	TUBB5
Function	Tubulin is the major constituent of microtubules, a cylinder consisting of laterally associated linear protofilaments composed of alpha- and beta-tubulin heterodimers. Microtubules grow by the addition of GTP-tubulin dimers to the microtubule end, where a stabilizing cap forms. Below the cap, tubulin dimers are in GDP-bound state, owing to GTPase activity of alpha-tubulin.
Cellular Location	Cytoplasm, cytoskeleton
Tissue Location	Ubiquitously expressed with highest levels in spleen, thymus and immature brain.

Images



Western blot analysis of beta Actin expression in (1) A431 cell lysate; (2) Rat brain lysate; (3) Mouse kidney lysate; (4) Chicken lung lysate; (5) Hamster spleen lysate with beta Tubulin Mouse Monoclonal Antibody.

Image not found : 202311/AP90009-IHC.jpg

Immunohistochemical analysis of paraffin-embedded human breast carcinoma, using beta Tubulin Mouse Monoclonal Antibody.

Image not found : 202311/AP90009-IF.jpg

Immunofluorescent analysis of Hela cells, using beta Tubulin mAb.

Please note: All products are 'FOR RESEARCH USE ONLY. NOT FOR USE IN DIAGNOSTIC OR THERAPEUTIC PROCEDURES'.