

# Actin Antibody

Rabbit mAb

Catalog # AP90015

## Product Information

<b>Application</b>	WB, IHC, IF, FC, ICC, IP, IHF
<b>Primary Accession</b>	<a href="#">P68133</a>
<b>Reactivity</b>	Rat, Human, Mouse, Chicken
<b>Clonality</b>	Monoclonal
<b>Other Names</b>	a actin; ACTA; ACTA1; Actin alpha skeletal muscle; Actin; actina; actine; aktin; Alpha Actin 1; Alpha skeletal muscle Actin; ASMA; CFTD; CFTD1; CFTDM; MPFD; NEM1; NEM2; NEM3; nemaline myopathy type 3;
<b>Isotype</b>	Rabbit IgG
<b>Host</b>	Rabbit
<b>Calculated MW</b>	42051

## Additional Information

<b>Dilution</b>	WB 1:3000~1:20000 IHC 1:50~1:200 ICC/IF 1:50~1:200 IP 1:50 FC 1:50
<b>Purification</b>	Affinity-chromatography
<b>Immunogen</b>	A synthesized peptide derived from human Actin
<b>Description</b>	Actins are highly conserved proteins that are involved in various types of cell motility and are ubiquitously expressed in all eukaryotic cells.
<b>Storage Condition and Buffer</b>	Rabbit IgG in phosphate buffered saline , pH 7.4, 150mM NaCl, 0.02% sodium azide and 50% glycerol. Store at +4°C short term. Store at -20°C long term. Avoid freeze / thaw cycle.

## Protein Information

<b>Name</b>	ACTA1
<b>Synonyms</b>	ACTA
<b>Function</b>	Actins are highly conserved proteins that are involved in various types of cell motility and are ubiquitously expressed in all eukaryotic cells.
<b>Cellular Location</b>	Cytoplasm, cytoskeleton.

## Images

Western blot analysis of Actin expression in (1) Hela cell lysate; (2) Human fetal kidney lysate; (3) 3T3 cell lysate; (4) Mouse spleen lysate; (5) PC-12 cell lysate; (6) Rat heart lysate.

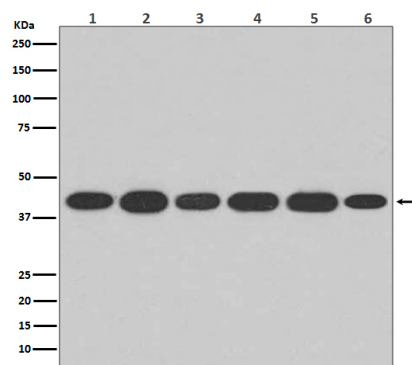


Image not found : 202311/AP90015-IHC.jpg

Immunohistochemical analysis of paraffin-embedded mouse heart, using Actin Antibody.

Image not found : 202311/AP90015-IF.jpg

Immunofluorescent analysis of Hela cells, using Actin Antibody.

Please note: All products are 'FOR RESEARCH USE ONLY. NOT FOR USE IN DIAGNOSTIC OR THERAPEUTIC PROCEDURES'.