

beta I Tubulin Antibody

Rabbit mAb

Catalog # AP90021

Product Information

Application	WB, IHC, IF, FC, ICC, IHF
Primary Accession	Q9H4B7
Reactivity	Rat, Human, Mouse, Monkey, Bovine, Dog
Clonality	Monoclonal
Other Names	Beta tubulin 1, class VI;Class VI beta tubulin antibody;TBB1_HUMAN;TUBB1;Tubulin beta 1 class VI;Tubulin, beta 1 antibody
Isotype	Rabbit IgG
Host	Rabbit
Calculated MW	50327

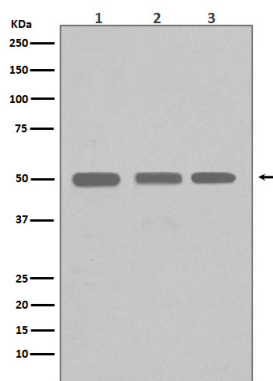
Additional Information

Dilution	WB 1:3000~1:10000 IHC 1:100~1:200 ICC/IF 1:100~1:200 FC 1:100
Purification	Affinity-chromatography
Immunogen	A synthesized peptide derived from human beta I Tubulin
Description	Tubulin is the major constituent of microtubules. It binds two moles of GTP, one at an exchangeable site on the beta chain and one at a non-exchangeable site on the alpha chain (By similarity).
Storage Condition and Buffer	Rabbit IgG in phosphate buffered saline , pH 7.4, 150mM NaCl, 0.02% sodium azide and 50% glycerol. Store at +4°C short term. Store at -20°C long term. Avoid freeze / thaw cycle.

Protein Information

Name	TUBB1
Function	Tubulin is the major constituent of microtubules, a cylinder consisting of laterally associated linear protofilaments composed of alpha- and beta-tubulin heterodimers. Microtubules grow by the addition of GTP-tubulin dimers to the microtubule end, where a stabilizing cap forms. Below the cap, tubulin dimers are in GDP-bound state, owing to GTPase activity of alpha-tubulin.
Cellular Location	Cytoplasm, cytoskeleton
Tissue Location	Hematopoietic cell-specific. Major isotype in leukocytes, where it represents 50% of all beta-tubulins

Images



Western blot analysis of beta I Tubulin expression in (1) K562 cell lysate; (2) Jurkat cell lysate; (3) HeLa cell lysate; (4) 293T cell lysate using beta I Tubulin antibody.

Image not found : 202311/AP90021-IHC.jpg

Immunohistochemical analysis of paraffin-embedded human tonsil, using beta I Tubulin Antibody.

Image not found : 202311/AP90021-IF.jpg

Immunofluorescent analysis of Hela cells, using beta I Tubulin Antibody .

Please note: All products are 'FOR RESEARCH USE ONLY. NOT FOR USE IN DIAGNOSTIC OR THERAPEUTIC PROCEDURES'.