

beta Tubulin Antibody

Rabbit mAb

Catalog # AP90023

Product Information

Application	WB, IHC, IP
Primary Accession	P07437
Reactivity	Rat, Human, Mouse
Clonality	Monoclonal
Other Names	Beta 4 tubulin; Beta 5 tubulin; Beta1 tubulin; Tubulin beta chain; Tubulin beta class I;
Isotype	Rabbit IgG
Host	Rabbit
Calculated MW	49671

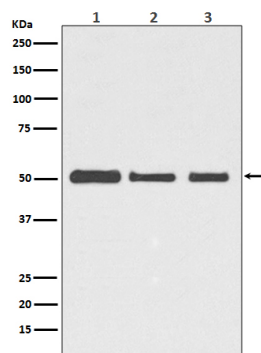
Additional Information

Dilution	WB 1:2000~1:20000 IHC 1:50~1:200 IP 1:50
Purification	Affinity-chromatography
Immunogen	A synthesized peptide derived from human beta Tubulin
Description	Tubulin is the major constituent of microtubules. It binds two moles of GTP, one at an exchangeable site on the beta chain and one at a non-exchangeable site on the alpha-chain.
Storage Condition and Buffer	Rabbit IgG in phosphate buffered saline , pH 7.4, 150mM NaCl, 0.02% sodium azide and 50% glycerol. Store at +4°C short term. Store at -20°C long term. Avoid freeze / thaw cycle.

Protein Information

Name	TUBB
Synonyms	TUBB5
Function	Tubulin is the major constituent of microtubules, a cylinder consisting of laterally associated linear protofilaments composed of alpha- and beta-tubulin heterodimers. Microtubules grow by the addition of GTP-tubulin dimers to the microtubule end, where a stabilizing cap forms. Below the cap, tubulin dimers are in GDP-bound state, owing to GTPase activity of alpha-tubulin.
Cellular Location	Cytoplasm, cytoskeleton
Tissue Location	Ubiquitously expressed with highest levels in spleen, thymus and immature brain.

Images



Western blot analysis of beta Tubulin expression in (1) HeLa cell lysate; (2) NIH/3T3 cell lysate; (3) C6 cell lysate.

Image not found : 202311/AP90023-IHC.jpg

Immunohistochemical analysis of paraffin-embedded human ovarian cancer, using beta Tubulin Antibody.

Image not found : 202311/AP90023-IF.jpg

Immunofluorescent analysis of PC12 cells, using beta Tubulin Antibody .

Please note: All products are 'FOR RESEARCH USE ONLY. NOT FOR USE IN DIAGNOSTIC OR THERAPEUTIC PROCEDURES'.