

alpha Tubulin Antibody

Rabbit mAb

Catalog # AP90028

Product Information

Application	WB, IHC, IF, FC, ICC, IP, IHF
Primary Accession	P68366
Reactivity	Rat, Human, Mouse
Clonality	Monoclonal
Other Names	Tubulin, alpha 4a; Tubulin H2-alpha; Tuba4a; bA408E5.3; B ALPHA 1
Isotype	Rabbit IgG
Host	Rabbit
Calculated MW	49924

Additional Information

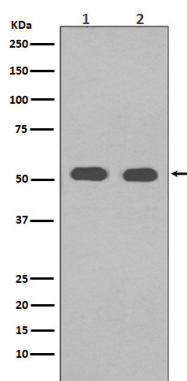
Dilution	WB 1:1000~1:5000 IHC 1:50~1:200 ICC/IF 1:50~1:200 IP 1:50 FC 1:50
Purification	Affinity-chromatography
Immunogen	A synthesized peptide derived from human alpha Tubulin
Description	Tubulin is the major constituent of microtubules. It binds two moles of GTP, one at an exchangeable site on the beta chain and one at a non-exchangeable site on the alpha chain.
Storage Condition and Buffer	Rabbit IgG in phosphate buffered saline , pH 7.4, 150mM NaCl, 0.02% sodium azide and 50% glycerol. Store at +4°C short term. Store at -20°C long term. Avoid freeze / thaw cycle.

Protein Information

Name	TUBA4A
Synonyms	TUBA1
Function	Tubulin is the major constituent of microtubules, a cylinder consisting of laterally associated linear protofilaments composed of alpha- and beta-tubulin heterodimers. Microtubules grow by the addition of GTP-tubulin dimers to the microtubule end, where a stabilizing cap forms. Below the cap, tubulin dimers are in GDP-bound state, owing to GTPase activity of alpha-tubulin.
Cellular Location	Cytoplasm, cytoskeleton.

Images

Western blot analysis of alpha Tubulin in (1) Hela cell



lysate; (2) NIH/3T3 cell lysate.

Image not found : 202311/AP90028-IHC.jpg

Immunohistochemical analysis of paraffin-embedded human bladder, using alpha Tubulin Antibody.

Image not found : 202311/AP90028-IF.jpg

Immunofluorescent analysis of 293 cells, using alpha Tubulin Antibody .

Please note: All products are 'FOR RESEARCH USE ONLY. NOT FOR USE IN DIAGNOSTIC OR THERAPEUTIC PROCEDURES'.