

alpha Tubulin Antibody

Rabbit mAb

Catalog # AP90029

Product Information

Application	WB, IHC, IF, FC, ICC, IP, IHF
Primary Accession	P68366
Reactivity	Rat, Human, Mouse
Clonality	Monoclonal
Other Names	Alpha-tubulin 1; TUBA1; TUBA1A ; Tubulin alpha 1 chain; Tubulin alpha
Isotype	Rabbit IgG
Host	Rabbit
Calculated MW	49924

Additional Information

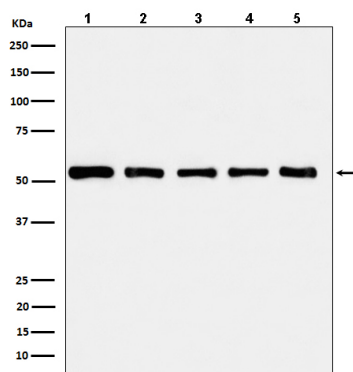
Dilution	WB 1:1000~1:10000 IHC 1:50~1:200 ICC/IF 1:50~1:200 IP 1:50 FC 1:50
Purification	Affinity-chromatography
Immunogen	A synthesized peptide derived from human alpha Tubulin
Description	TUBA1A Tubulin is the major constituent of microtubules. It binds two moles of GTP, one at an exchangeable site on the beta chain and one at a non-exchangeable site on the alpha-chain.
Storage Condition and Buffer	Rabbit IgG in phosphate buffered saline , pH 7.4, 150mM NaCl, 0.02% sodium azide and 50% glycerol. Store at +4°C short term. Store at -20°C long term. Avoid freeze / thaw cycle.

Protein Information

Name	TUBA4A
Synonyms	TUBA1
Function	Tubulin is the major constituent of microtubules, a cylinder consisting of laterally associated linear protofilaments composed of alpha- and beta-tubulin heterodimers. Microtubules grow by the addition of GTP-tubulin dimers to the microtubule end, where a stabilizing cap forms. Below the cap, tubulin dimers are in GDP-bound state, owing to GTPase activity of alpha-tubulin.
Cellular Location	Cytoplasm, cytoskeleton.

Images

Western blot analysis of alpha Tubulin in (1) HeLa cell



lysate; (2) HepG2 cell lysate; (3) NIH/3T3 cell lysate; (4) Mouse brain lysate; (5) C6 cell lysate.

Image not found : 202311/AP90029-IHC.jpg

Immunohistochemical analysis of paraffin-embedded human breast cancer, using alpha Tubulin Antibody.

Image not found : 202311/AP90029-IF.jpg

Immunofluorescent analysis of Hela cells, using alpha Tubulin Antibody .

Image not found : 202311/AP90029-wb6.jpg

Oral cancer-derived exosomal NAP1 enhances cytotoxicity of natural killer cells via the IRF-3 pathway.
-Oral Oncology

Please note: All products are 'FOR RESEARCH USE ONLY. NOT FOR USE IN DIAGNOSTIC OR THERAPEUTIC PROCEDURES'.