

alpha Tubulin(yeast) Antibody

Rabbit mAb

Catalog # AP90030

Product Information

Application	WB
Primary Accession	P09733
Reactivity	Yeast
Clonality	Monoclonal
Other Names	Alpha-tubulin 1;H2 ALPHA;LIS3;TUBA1;TUBA1A;Tuba4a;Tubulin alpha-4A chain
Isotype	Rabbit IgG
Host	Rabbit
Calculated MW	49800

Additional Information

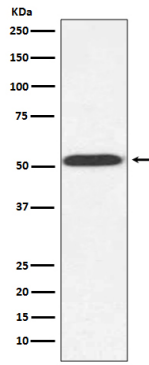
Dilution	WB 1:3000~1:10000
Purification	Affinity-chromatography
Immunogen	A synthesized peptide derived from yeast alpha Tubulin
Description	Tubulin is the major constituent of microtubules. It binds two moles of GTP, one at an exchangeable site on the beta chain and one at a non-exchangeable site on the alpha chain.
Storage Condition and Buffer	Rabbit IgG in phosphate buffered saline , pH 7.4, 150mM NaCl, 0.02% sodium azide and 50% glycerol. Store at +4°C short term. Store at -20°C long term. Avoid freeze / thaw cycle.

Protein Information

Name	TUB1
Function	Tubulin is the major constituent of microtubules, a cylinder consisting of laterally associated linear protofilaments composed of alpha- and beta-tubulin heterodimers (PubMed: 11739794). Microtubules grow by the addition of GTP-tubulin dimers to the microtubule end, where a stabilizing cap forms. Below the cap, tubulin dimers are in GDP-bound state, owing to GTPase activity of alpha-tubulin.
Cellular Location	Cytoplasm, cytoskeleton

Images

Western blot analysis of alpha Tubulin expression in Saccharomyces cerevisiae (yeast) cell lysate.



Please note: All products are 'FOR RESEARCH USE ONLY. NOT FOR USE IN DIAGNOSTIC OR THERAPEUTIC PROCEDURES'.