

# beta Tubulin Antibody

Rabbit mAb

Catalog # AP90037

## Product Information

<b>Application</b>	WB, IHC, IF, FC, ICC, IHF
<b>Primary Accession</b>	<a href="#">P07437</a>
<b>Reactivity</b>	Rat, Human, Mouse, Zebrafish, Monkey, Chicken, Bovine, Dog
<b>Clonality</b>	Monoclonal
<b>Other Names</b>	Beta 4 tubulin; Beta 5 tubulin; Beta1 tubulin; Tubulin beta chain; Tubulin beta class I;
<b>Isotype</b>	Rabbit IgG
<b>Host</b>	Rabbit
<b>Calculated MW</b>	49671

## Additional Information

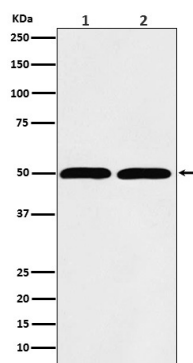
<b>Dilution</b>	WB 1:3000~1:10000 IHC 1:100~1:200 ICC/IF 1:100~1:500 FC 1:50
<b>Purification</b>	Affinity-chromatography
<b>Immunogen</b>	A synthesized peptide derived from human beta Tubulin
<b>Description</b>	Tubulin is the major constituent of microtubules. It binds two moles of GTP, one at an exchangeable site on the beta chain and one at a non-exchangeable site on the alpha-chain.
<b>Storage Condition and Buffer</b>	Rabbit IgG in phosphate buffered saline , pH 7.4, 150mM NaCl, 0.02% sodium azide and 50% glycerol. Store at +4°C short term. Store at -20°C long term. Avoid freeze / thaw cycle.

## Protein Information

<b>Name</b>	TUBB
<b>Synonyms</b>	TUBB5
<b>Function</b>	Tubulin is the major constituent of microtubules, a cylinder consisting of laterally associated linear protofilaments composed of alpha- and beta-tubulin heterodimers. Microtubules grow by the addition of GTP-tubulin dimers to the microtubule end, where a stabilizing cap forms. Below the cap, tubulin dimers are in GDP-bound state, owing to GTPase activity of alpha-tubulin.
<b>Cellular Location</b>	Cytoplasm, cytoskeleton
<b>Tissue Location</b>	Ubiquitously expressed with highest levels in spleen, thymus and immature brain.

## Images

---



Western blot analysis of beta Tubulin expression in (1) Hela cell lysate; (2) RAW 264.7 lysate.

Please note: All products are 'FOR RESEARCH USE ONLY. NOT FOR USE IN DIAGNOSTIC OR THERAPEUTIC PROCEDURES'.