

# EBP Antibody (N-term)

Affinity Purified Rabbit Polyclonal Antibody (Pab)

Catalog # AP9004a

## Product Information

---

<b>Application</b>	WB, IHC-P, FC, E
<b>Primary Accession</b>	<a href="#">Q15125</a>
<b>Reactivity</b>	Human, Mouse
<b>Host</b>	Rabbit
<b>Clonality</b>	Polyclonal
<b>Isotype</b>	Rabbit IgG
<b>Clone Names</b>	RB23728
<b>Calculated MW</b>	26353
<b>Antigen Region</b>	1-30

## Additional Information

---

<b>Gene ID</b>	10682
<b>Other Names</b>	3-beta-hydroxysteroid-Delta(8), Delta(7)-isomerase, Cholestenol Delta-isomerase, Delta(8)-Delta(7) sterol isomerase, D8-D7 sterol isomerase, Emopamil-binding protein, EBP
<b>Target/Specificity</b>	This EBP antibody is generated from rabbits immunized with a KLH conjugated synthetic peptide between 1-30 amino acids from the N-terminal region of human EBP.
<b>Dilution</b>	WB~~1:1000 IHC-P~~1:100~500 FC~~1:10~50 E~~Use at an assay dependent concentration.
<b>Format</b>	Purified polyclonal antibody supplied in PBS with 0.05% (V/V) Proclin 300. This antibody is purified through a protein A column, followed by peptide affinity purification.
<b>Storage</b>	Maintain refrigerated at 2-8°C for up to 2 weeks. For long term storage store at -20°C in small aliquots to prevent freeze-thaw cycles.
<b>Precautions</b>	EBP Antibody (N-term) is for research use only and not for use in diagnostic or therapeutic procedures.

## Protein Information

---

<b>Name</b>	EBP ( <a href="#">HGNC:3133</a> )
<b>Function</b>	Isomerase that catalyzes the conversion of Delta(8)-sterols to their corresponding Delta(7)-isomers a catalytic step in the postlanosterol

biosynthesis of cholesterol.

### Cellular Location

Endoplasmic reticulum membrane; Multi-pass membrane protein. Nucleus envelope Cytoplasmic vesicle. Note=During interphase, detected on the endoplasmic reticulum and the nuclear envelope. During mitosis, detected on cytoplasmic vesicles

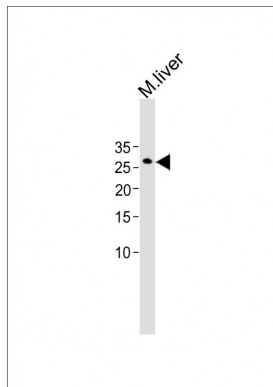
## Background

EBP catalyzes the conversion of Delta(8)-sterols to their corresponding Delta(7)-isomers.

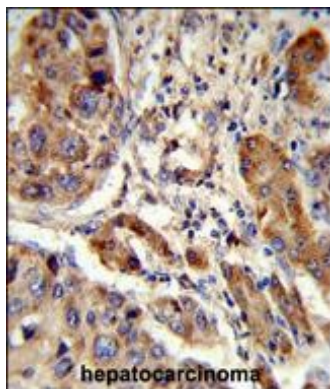
## References

Rakheja,D., et.al., Pediatr. Dev. Pathol. 10 (2), 142-148 (2007)

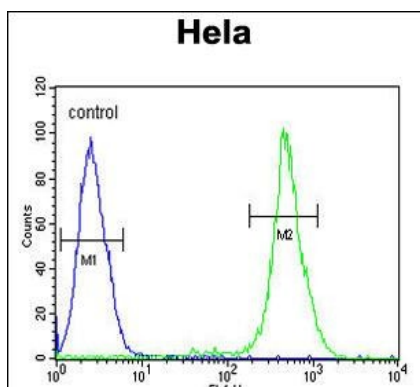
## Images



All lanes: Anti-EBP Antibody (N-term) at 1:500 dilution + Mouse liver lysate Lysates/proteins at 20 µg per lane. Secondary: Goat Anti-Rabbit IgG, (H+L), Peroxidase conjugated (ASP1615) at 1/15000 dilution. Observed band size: 26.4 kDa Blocking/Dilution buffer: 5% NFDM/TBST.



Formalin-fixed and paraffin-embedded human hepatocarcinoma reacted with EBP Antibody (N-term), which was peroxidase-conjugated to the secondary antibody, followed by DAB staining. This data demonstrates the use of this antibody for immunohistochemistry; clinical relevance has not been evaluated.



EBP Antibody (N-term) (Cat. #AP9004a) flow cytometric analysis of HeLa cells (right histogram) compared to a negative control cell (left histogram). FITC-conjugated goat-anti-rabbit secondary antibodies were used for the analysis.

Please note: All products are 'FOR RESEARCH USE ONLY. NOT FOR USE IN DIAGNOSTIC OR THERAPEUTIC PROCEDURES'.