

# EDIL3 Antibody (Center)

Affinity Purified Rabbit Polyclonal Antibody (Pab)

Catalog # AP9005c

## Product Information

---

<b>Application</b>	WB, IHC-P, FC, E
<b>Primary Accession</b>	<a href="#">O43854</a>
<b>Other Accession</b>	<a href="#">O35474</a>
<b>Reactivity</b>	Human, Rat, Mouse
<b>Predicted</b>	Mouse
<b>Host</b>	Rabbit
<b>Clonality</b>	Polyclonal
<b>Isotype</b>	Rabbit IgG
<b>Clone Names</b>	RB23732
<b>Calculated MW</b>	53765
<b>Antigen Region</b>	337-365

## Additional Information

---

<b>Gene ID</b>	10085
<b>Other Names</b>	EGF-like repeat and discoidin I-like domain-containing protein 3, Developmentally-regulated endothelial cell locus 1 protein, Integrin-binding protein DEL1, EDIL3, DEL1
<b>Target/Specificity</b>	This EDIL3 antibody is generated from rabbits immunized with a KLH conjugated synthetic peptide between 337-365 amino acids from the Central region of human EDIL3.
<b>Dilution</b>	WB~~1:1000 IHC-P~~1:100~500 FC~~1:10~50 E~~Use at an assay dependent concentration.
<b>Format</b>	Purified polyclonal antibody supplied in PBS with 0.09% (W/V) sodium azide. This antibody is purified through a protein A column, followed by peptide affinity purification.
<b>Storage</b>	Maintain refrigerated at 2-8°C for up to 2 weeks. For long term storage store at -20°C in small aliquots to prevent freeze-thaw cycles.
<b>Precautions</b>	EDIL3 Antibody (Center) is for research use only and not for use in diagnostic or therapeutic procedures.

## Protein Information

---

<b>Name</b>	EDIL3
-------------	-------

<b>Synonyms</b>	DEL1
<b>Function</b>	Promotes adhesion of endothelial cells through interaction with the alpha-v/beta-3 integrin receptor. Inhibits formation of vascular-like structures. May be involved in regulation of vascular morphogenesis of remodeling in embryonic development.
<b>Cellular Location</b>	Secreted.

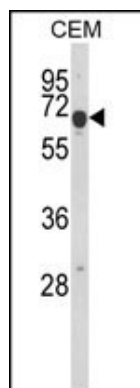
## Background

EDIL3 is an integrin ligand. It plays an important role in mediating angiogenesis and may be important in vessel wall remodeling and development. It also influences endothelial cell behavior.

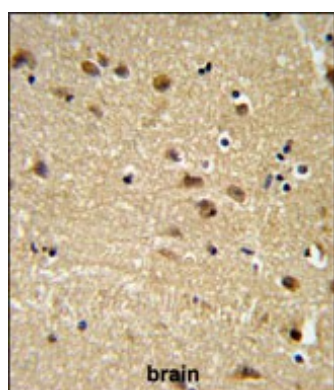
## References

Aoka,Y., et.al., Microvasc. Res. 64 (1), 148-161 (2002)

## Images

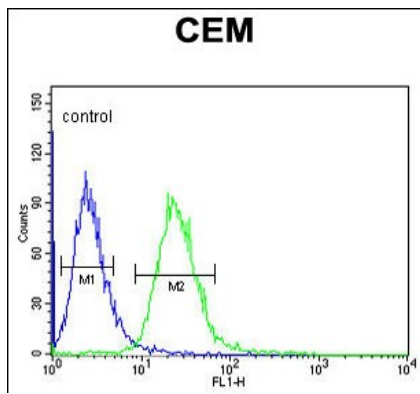


Western blot analysis of EDIL3 Antibody (Center) (Cat. #AP9005c) in CEM cell line lysates (35ug/lane). EDIL3 (arrow) was detected using the purified Pab.



EDIL3 Antibody (Center)(Cat. #AP9005c) IHC analysis in formalin fixed and paraffin embedded brain tissue followed by peroxidase conjugation of the secondary antibody and DAB staining. This data demonstrates the use of the EDIL3 Antibody (Center) for immunohistochemistry. Clinical relevance has not been evaluated.

EDIL3 Antibody (Center) (Cat. #AP9005c) flow cytometric analysis of CEM cells (right histogram) compared to a negative control cell (left histogram).FITC-conjugated goat-anti-rabbit secondary antibodies were used for the analysis.



Please note: All products are 'FOR RESEARCH USE ONLY. NOT FOR USE IN DIAGNOSTIC OR THERAPEUTIC PROCEDURES'.