

# DSG1 Antibody

Rabbit mAb

Catalog # AP90067

## Product Information

<b>Application</b>	WB, IHC, IF, ICC, IHF
<b>Primary Accession</b>	<a href="#">Q02413</a>
<b>Reactivity</b>	Rat, Human, Mouse
<b>Clonality</b>	Monoclonal
<b>Other Names</b>	Desmoglein-1; Desmosomal glycoprotein 1; DG1; DGI; Pemphigus foliaceus antigen; Cadherin family member 4; DSG1; CDHF4
<b>Isotype</b>	Rabbit IgG
<b>Host</b>	Rabbit
<b>Calculated MW</b>	113748

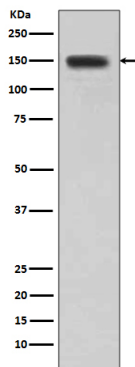
## Additional Information

<b>Dilution</b>	WB 1:500~1:2000 IHC 1:50~1:200
<b>Purification</b>	Affinity-chromatography
<b>Immunogen</b>	A synthesized peptide derived from human DSG1
<b>Description</b>	Component of intercellular desmosome junctions. Involved in the interaction of plaque proteins and intermediate filaments mediating cell-cell adhesion.
<b>Storage Condition and Buffer</b>	Rabbit IgG in phosphate buffered saline , pH 7.4, 150mM NaCl, 0.02% sodium azide and 50% glycerol. Store at +4°C short term. Store at -20°C long term. Avoid freeze / thaw cycle.

## Protein Information

<b>Name</b>	DSG1
<b>Synonyms</b>	CDHF4
<b>Function</b>	Component of intercellular desmosome junctions (PubMed: <a href="#">34368962</a> ). Involved in the interaction of plaque proteins and intermediate filaments mediating cell-cell adhesion (PubMed: <a href="#">19717567</a> ).
<b>Cellular Location</b>	Cell membrane; Single-pass type I membrane protein {ECO:0000250 UniProtKB:Q7TSF1} Cell junction, desmosome. Cytoplasm. Nucleus
<b>Tissue Location</b>	Expressed in all suprabasal layers of the epidermis, with the highest expression seen in the granular layer (at protein level).

## Images



Western blot analysis of DSG1 expression in human skin lysate.

Image not found : 202311/AP90067-IHC.jpg

Immunohistochemical analysis of paraffin-embedded human cervix cancer, using DSG1 Antibody.

Please note: All products are 'FOR RESEARCH USE ONLY. NOT FOR USE IN DIAGNOSTIC OR THERAPEUTIC PROCEDURES'.