

KIFC1 Antibody

Rabbit mAb

Catalog # AP90072

Product Information

Application	WB, IHC, IF, ICC, IP, IHF
Primary Accession	Q9BW19
Reactivity	Human
Clonality	Monoclonal
Other Names	HSET; HSET KNSL2; KIFC1; Kinesin family member C1; KNSL2; MKLP2; RAB6 KIFL; Rabkinesin 6;
Isotype	Rabbit IgG
Host	Rabbit
Calculated MW	73748

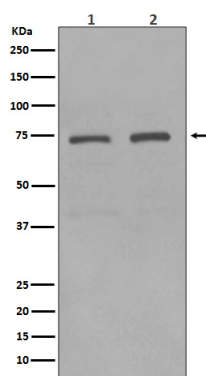
Additional Information

Dilution	WB 1:1000~1:2000 IHC 1:50~1:200 ICC/IF 1:50~1:200 IP 1:50
Purification	Affinity-chromatography
Immunogen	A synthesized peptide derived from human KIFC1
Description	Minus end-directed microtubule-dependent motor required for bipolar spindle formation. May contribute to movement of early endocytic vesicles.
Storage Condition and Buffer	Rabbit IgG in phosphate buffered saline , pH 7.4, 150mM NaCl, 0.02% sodium azide and 50% glycerol. Store at +4°C short term. Store at -20°C long term. Avoid freeze / thaw cycle.

Protein Information

Name	KIFC1
Synonyms	HSET, KNSL2
Function	Minus end-directed microtubule-dependent motor required for bipolar spindle formation (PubMed: 15843429). May contribute to movement of early endocytic vesicles (By similarity). Regulates cilium formation and structure (By similarity).
Cellular Location	Nucleus {ECO:0000250 UniProtKB:Q9QWT9}. Cytoplasm, cytoskeleton, microtubule organizing center, centrosome {ECO:0000250 UniProtKB:Q9QWT9}. Cytoplasm, cytoskeleton, spindle {ECO:0000250 UniProtKB:Q9QWT9}. Early endosome {ECO:0000250 UniProtKB:Q9QWT9}. Note=Associated with nucleus during interphase, centrosomes in early and spindle in later mitosis {ECO:0000250 UniProtKB:Q9QWT9}

Images



Western blot analysis of KIFC1 expression in (1) HeLa cell lysate; (2) HepG2 cell lysate.

Image not found : 202311/AP90072-IHC.jpg

Immunohistochemical analysis of paraffin-embedded human thyroid carcinoma, using KIFC1 Antibody.

Please note: All products are 'FOR RESEARCH USE ONLY. NOT FOR USE IN DIAGNOSTIC OR THERAPEUTIC PROCEDURES'.