

# Caveolin-3 Antibody

Rabbit mAb

Catalog # AP90078

## Product Information

<b>Application</b>	WB, IP
<b>Primary Accession</b>	<a href="#">P56539</a>
<b>Reactivity</b>	Rat, Human, Mouse
<b>Clonality</b>	Monoclonal
<b>Other Names</b>	CAV3; M-caveolin; Caveolin 3; VIP21;
<b>Isotype</b>	Rabbit IgG
<b>Host</b>	Rabbit
<b>Calculated MW</b>	17259

## Additional Information

<b>Dilution</b>	WB 1:500~1:2000 IP 1:50
<b>Purification</b>	Affinity-chromatography
<b>Immunogen</b>	A synthesized peptide derived from human Caveolin-3
<b>Description</b>	Caveolin-3 may act as a scaffolding protein within caveolar membranes. Interacts directly with G-protein alpha subunits and can functionally regulate their activity. Plays a role in the sarcolemma repair mechanism of both skeletal muscle and cardiomyocytes that permits rapid resealing of membranes disrupted by mechanical stress.
<b>Storage Condition and Buffer</b>	Rabbit IgG in phosphate buffered saline , pH 7.4, 150mM NaCl, 0.02% sodium azide and 50% glycerol. Store at +4°C short term. Store at -20°C long term. Avoid freeze / thaw cycle.

## Protein Information

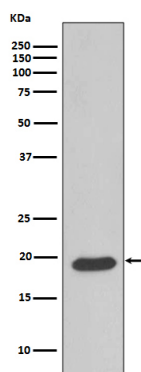
<b>Name</b>	CAV3
<b>Function</b>	May act as a scaffolding protein within caveolar membranes. Interacts directly with G-protein alpha subunits and can functionally regulate their activity. May also regulate voltage-gated potassium channels. Plays a role in the sarcolemma repair mechanism of both skeletal muscle and cardiomyocytes that permits rapid resealing of membranes disrupted by mechanical stress (By similarity). Mediates the recruitment of CAVIN2 and CAVIN3 proteins to the caveolae (PubMed: <a href="#">19262564</a> ).
<b>Cellular Location</b>	Golgi apparatus membrane; Peripheral membrane protein. Cell membrane {ECO:0000250 UniProtKB:P51638}; Peripheral membrane protein. Membrane, caveola {ECO:0000250 UniProtKB:P51637}; Peripheral membrane protein. Cell membrane, sarcolemma {ECO:0000250 UniProtKB:P51637}. Note=Potential hairpin-like structure in the membrane. Membrane protein of caveolae (By similarity)

**Tissue Location**

Expressed predominantly in muscle.

**Images**

---



Western blot analysis of Caveolin 3 expression in Human fetal heart lysate.

Please note: All products are 'FOR RESEARCH USE ONLY. NOT FOR USE IN DIAGNOSTIC OR THERAPEUTIC PROCEDURES'.