

# SIRT1 Antibody

Rabbit mAb

Catalog # AP90090

## Product Information

---

<b>Application</b>	WB, IHC, IF, ICC, IP, IHF
<b>Primary Accession</b>	<a href="#">Q96EB6</a>
<b>Reactivity</b>	Human
<b>Clonality</b>	Monoclonal
<b>Other Names</b>	hSIR2; hSIRT1; NAD-dependent deacetylase sirtuin 1; SIR1; SIR2-like protein 1; SIR2L1; sirtuin 1
<b>Isotype</b>	Rabbit IgG
<b>Host</b>	Rabbit
<b>Calculated MW</b>	110 KDa

## Additional Information

---

<b>Dilution</b>	WB 1:500~1:2000 IHC 1:50~1:200 ICC/IF 1:50~1:200 IP 1:30
<b>Purification</b>	Affinity-chromatography
<b>Immunogen</b>	A synthesized peptide derived from human SIRT1
<b>Description</b>	This gene encodes a member of the sirtuin family of proteins, homologs to the yeast Sir2 protein. Members of the sirtuin family are characterized by a sirtuin core domain and grouped into four classes. The functions of human sirtuins have not yet been determined; however, yeast sirtuin proteins are known to regulate epigenetic gene silencing and suppress recombination of rDNA.
<b>Storage Condition and Buffer</b>	Rabbit IgG in phosphate buffered saline , pH 7.4, 150mM NaCl, 0.02% sodium azide and 50% glycerol. Store at +4°C short term. Store at -20°C long term. Avoid freeze / thaw cycle.

## Protein Information

---

## Images

---

Western blot analysis of Sir2/SIRT1 expression in Jurkat cell lysate.

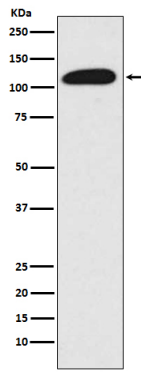


Image not found : 202311/AP90090-IHC.jpg

Immunohistochemical analysis of paraffin-embedded human kidney, using SIRT1 Antibody.

Image not found : 202311/AP90090-IF.jpg

Immunofluorescent analysis of Hela cells, using SIRT1 Antibody .

Please note: All products are 'FOR RESEARCH USE ONLY. NOT FOR USE IN DIAGNOSTIC OR THERAPEUTIC PROCEDURES'.