

CPI17 alpha Antibody

Rabbit mAb

Catalog # AP90106

Product Information

Application	WB, IP
Primary Accession	Q96A00
Reactivity	Human, Mouse, Rat
Clonality	Monoclonal
Other Names	CPI17; PKC-potentiased inhibitory protein of PP1; PP14A; PPP1INL; PPP1R14A;
Isotype	Rabbit IgG
Host	Rabbit
Calculated MW	16693

Additional Information

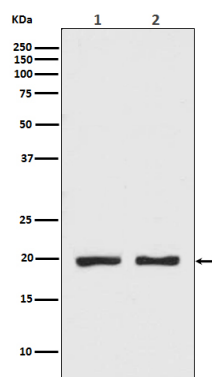
Dilution	WB 1:500~1:2000 IP 1:30
Purification	Affinity-chromatography
Immunogen	A synthesized peptide derived from human CPI17 alpha
Description	CPI17 alpha a phosphorylation-dependent inhibitory subunit of protein phosphatase 1 (PP-1A). Phosphorylation by PKC regulates its binding to PP-1A. Acts co-operatively to inhibit myosin light chain phosphatase (MLCP) activity.
Storage Condition and Buffer	Rabbit IgG in phosphate buffered saline , pH 7.4, 150mM NaCl, 0.02% sodium azide and 50% glycerol. Store at +4°C short term. Store at -20°C long term. Avoid freeze / thaw cycle.

Protein Information

Name	PPP1R14A
Synonyms	CPI17, PPP1INL
Function	Inhibitor of PPP1CA. Has over 1000-fold higher inhibitory activity when phosphorylated, creating a molecular switch for regulating the phosphorylation status of PPP1CA substrates and smooth muscle contraction.
Cellular Location	Cytoplasm.
Tissue Location	Isoform 1 is detected in aorta and testis. Isoform 2 is detected in aorta.

Images

Western blot analysis of CPI17 alpha expression in (1) MCF7 cell lysate; (2) 293T cell lysate.



Please note: All products are 'FOR RESEARCH USE ONLY. NOT FOR USE IN DIAGNOSTIC OR THERAPEUTIC PROCEDURES'.