

# Phospho-Creb (S133) Antibody

Rabbit mAb

Catalog # AP90110

## Product Information

<b>Application</b>	WB, IHC, IF, FC, ICC, IP, IHF
<b>Primary Accession</b>	<a href="#">P16220</a>
<b>Reactivity</b>	Rat, Human, Mouse
<b>Clonality</b>	Monoclonal
<b>Other Names</b>	cAMP responsive element binding protein 1; CREB1; CREB-1
<b>Isotype</b>	Rabbit IgG
<b>Host</b>	Rabbit
<b>Calculated MW</b>	35136

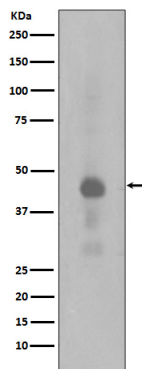
## Additional Information

<b>Dilution</b>	WB 1:500~1:2000 IHC 1:50~1:200 ICC/IF 1:50~1:200 IP 1:40 FC 1:40
<b>Purification</b>	Affinity-chromatography
<b>Immunogen</b>	A synthesized peptide derived from human Phospho-Creb (S133)
<b>Description</b>	This gene encodes a transcription factor that is a member of the leucine zipper family of DNA binding proteins. This protein binds as a homodimer to the cAMP-responsive element, an octameric palindrome.
<b>Storage Condition and Buffer</b>	Rabbit IgG in phosphate buffered saline , pH 7.4, 150mM NaCl, 0.02% sodium azide and 50% glycerol. Store at +4°C short term. Store at -20°C long term. Avoid freeze / thaw cycle.

## Protein Information

<b>Name</b>	CREB1
<b>Function</b>	Phosphorylation-dependent transcription factor that stimulates transcription upon binding to the DNA cAMP response element (CRE), a sequence present in many viral and cellular promoters (By similarity). Transcription activation is enhanced by the TORC coactivators which act independently of Ser-119 phosphorylation (PubMed: <a href="#">14536081</a> ). Involved in different cellular processes including the synchronization of circadian rhythmicity and the differentiation of adipose cells (By similarity). Regulates the expression of apoptotic and inflammatory response factors in cardiomyocytes in response to ERFE-mediated activation of AKT signaling (By similarity).
<b>Cellular Location</b>	Nucleus {ECO:0000255   PROSITE-ProRule:PRU00312, ECO:0000255   PROSITE-ProRule:PRU00978, ECO:0000269   PubMed:12552083}

## Images



Western blot analysis of Phospho-Creb(Ser133) expression in HeLa cell lysates treated with Calyculin A.

Image not found : 202311/AP90110-IHC.jpg

Immunohistochemical analysis of paraffin-embedded human gastric carcinoma, using Phospho-Creb (S133) Antibody.

Please note: All products are 'FOR RESEARCH USE ONLY. NOT FOR USE IN DIAGNOSTIC OR THERAPEUTIC PROCEDURES'.