

Bcl-XL Antibody

Rabbit mAb

Catalog # AP90117

Product Information

Application	WB, IHC, IF, FC, ICC, IP, IHF
Primary Accession	Q07817
Reactivity	Rat, Human, Mouse
Clonality	Monoclonal
Other Names	Apoptosis regulator Bcl-X; BCL2L; Bcl-2-like 1 protein bclxl; BCL2L; BCL2L1; BCLX;
Isotype	Rabbit IgG
Host	Rabbit
Calculated MW	26049

Additional Information

Dilution	WB 1:500~1:2000 IHC 1:50~1:200 ICC/IF 1:50~1:200 IP 1:50
Purification	Affinity-chromatography
Immunogen	A synthesized peptide derived from human Bcl-XL
Description	The protein encoded by this gene belongs to the BCL-2 protein family. BCL-2 family members form hetero- or homodimers and act as anti- or pro-apoptotic regulators that are involved in a wide variety of cellular activities.
Storage Condition and Buffer	Rabbit IgG in phosphate buffered saline , pH 7.4, 150mM NaCl, 0.02% sodium azide and 50% glycerol. Store at +4°C short term. Store at -20°C long term. Avoid freeze / thaw cycle.

Protein Information

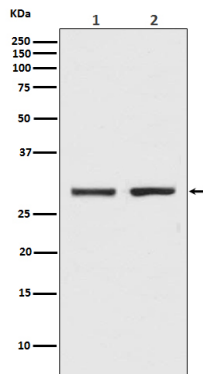
Name	BCL2L1
Synonyms	BCL2L, BCLX
Function	Potent inhibitor of cell death. Inhibits activation of caspases. Appears to regulate cell death by blocking the voltage- dependent anion channel (VDAC) by binding to it and preventing the release of the caspase activator, CYC1, from the mitochondrial membrane. Also acts as a regulator of G2 checkpoint and progression to cytokinesis during mitosis. Isoform Bcl-X(S) promotes apoptosis.
Cellular Location	[Isoform Bcl-X(L)]: Mitochondrion inner membrane. Mitochondrion outer membrane Mitochondrion matrix. Cytoplasmic vesicle, secretory vesicle, synaptic vesicle membrane. Cytoplasm, cytosol. Cytoplasm, cytoskeleton, microtubule organizing center, centrosome. Nucleus membrane; Single-pass membrane protein; Cytoplasmic side. Note=After neuronal stimulation,

translocates from cytosol to synaptic vesicle and mitochondrion membrane in a calmodulin-dependent manner (By similarity). Localizes to the centrosome when phosphorylated at Ser-49

Tissue Location

Bcl-X(S) is expressed at high levels in cells that undergo a high rate of turnover, such as developing lymphocytes. In contrast, Bcl-X(L) is found in tissues containing long-lived postmitotic cells, such as adult brain

Images



Western blot analysis of Bcl-XL expression in (1) K562 cell lysate; (2) C6 cell lysate.

Image not found : 202311/AP90117-IHC.jpg

Immunohistochemical analysis of paraffin-embedded human liver cancer, using Bcl-XL Antibody.

Image not found : 202311/AP90117-IF.jpg

Immunofluorescent analysis of Hela cells, using Bcl-XL Antibody .

Please note: All products are 'FOR RESEARCH USE ONLY. NOT FOR USE IN DIAGNOSTIC OR THERAPEUTIC PROCEDURES'.