

STAT5a Antibody

Rabbit mAb

Catalog # AP90122

Product Information

Application	WB, IHC, IF, FC, ICC, IP, IHF
Primary Accession	P42229
Reactivity	Rat, Human, Mouse
Clonality	Monoclonal
Other Names	MGF; MPF; Mammary gland factor; STA5A; STAT5; STAT5A
Isotype	Rabbit IgG
Host	Rabbit
Calculated MW	90647

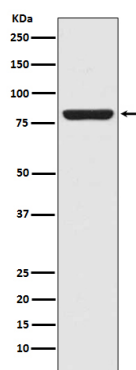
Additional Information

Dilution	WB 1:500~1:2000 IHC 1:50~1:200 ICC/IF 1:50~1:200 IP 1:50
Purification	Affinity-chromatography
Immunogen	A synthesized peptide derived from human STAT5a
Description	The protein encoded by this gene is a member of the STAT family of transcription factors. In response to cytokines and growth factors, STAT family members are phosphorylated by the receptor associated kinases, and then form homo- or heterodimers that translocate to the cell nucleus where they act as transcription activators.
Storage Condition and Buffer	Rabbit IgG in phosphate buffered saline , pH 7.4, 150mM NaCl, 0.02% sodium azide and 50% glycerol. Store at +4°C short term. Store at -20°C long term. Avoid freeze / thaw cycle.

Protein Information

Name	STAT5A
Synonyms	STAT5
Function	Carries out a dual function: signal transduction and activation of transcription. Mediates cellular responses to the cytokine KITLG/SCF and other growth factors. Mediates cellular responses to ERBB4. May mediate cellular responses to activated FGFR1, FGFR2, FGFR3 and FGFR4. Binds to the GAS element and activates PRL- induced transcription. Regulates the expression of milk proteins during lactation.
Cellular Location	Cytoplasm. Nucleus. Note=Translocated into the nucleus in response to phosphorylation

Images



Western blot analysis of STAT5a in A431 cell lysate.

Please note: All products are 'FOR RESEARCH USE ONLY. NOT FOR USE IN DIAGNOSTIC OR THERAPEUTIC PROCEDURES'.