

CCR9 Antibody

Rabbit mAb

Catalog # AP90123

Product Information

Application	WB, IF, FC, ICC
Primary Accession	P51686
Reactivity	Rat, Human, Mouse
Clonality	Monoclonal
Other Names	G-protein coupled receptor 28; GPR-9-6; CDw199;CCR9
Isotype	Rabbit IgG
Host	Rabbit
Calculated MW	42016

Additional Information

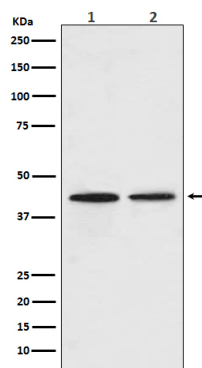
Dilution	WB 1:500~1:2000 ICC/IF 1:50~1:200 FC 1:50
Purification	Affinity-chromatography
Immunogen	A synthesized peptide derived from human CCR9
Description	Receptor for chemokine SCYA25/TECK. Subsequently transduces a signal by increasing the intracellular calcium ions level. Alternative coreceptor with CD4 for HIV-1 infection.
Storage Condition and Buffer	Rabbit IgG in phosphate buffered saline , pH 7.4, 150mM NaCl, 0.02% sodium azide and 50% glycerol. Store at +4°C short term. Store at -20°C long term. Avoid freeze / thaw cycle.

Protein Information

Name	CCR9
Synonyms	GPR28
Function	Receptor for chemokine SCYA25/TECK. Subsequently transduces a signal by increasing the intracellular calcium ions level.
Cellular Location	Cell membrane; Multi-pass membrane protein
Tissue Location	Highly expressed in the thymus and low in lymph nodes and spleen.

Images

Western blot analysis of CCR9 in (1) A549 cell lysate; (2) Daudi cell lysate.



Please note: All products are 'FOR RESEARCH USE ONLY. NOT FOR USE IN DIAGNOSTIC OR THERAPEUTIC PROCEDURES'.