

RNF20 Antibody

Rabbit mAb

Catalog # AP90137

Product Information

Application	WB, IF, FC, ICC, IP
Primary Accession	Q5VTR2
Reactivity	Human, Mouse
Clonality	Monoclonal
Other Names	RING finger protein 20; BRE1A;RNF20;
Isotype	Rabbit IgG
Host	Rabbit
Calculated MW	114 KDa

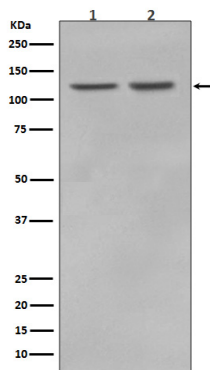
Additional Information

Dilution	WB 1:500~1:2000 ICC/IF 1:50~1:200 IP 1:50 FC 1:50
Purification	Affinity-chromatography
Immunogen	A synthesized peptide derived from human RNF20
Description	Component of the RNF20/40 E3 ubiquitin-protein ligase complex that mediates monoubiquitination of 'Lys-120' of histone H2B (H2BK120ub1). H2BK120ub1 gives a specific tag for epigenetic transcriptional activation and is also prerequisite for histone H3 'Lys-4' and 'Lys-79' methylation (H3K4me and H3K79me, respectively). It thereby plays a central role in histone code and gene regulation.
Storage Condition and Buffer	Rabbit IgG in phosphate buffered saline , pH 7.4, 150mM NaCl, 0.02% sodium azide and 50% glycerol. Store at +4°C short term. Store at -20°C long term. Avoid freeze / thaw cycle.

Protein Information

Images

Western blot analysis of RNF20 in (1) MCF7 cell lysate; (2) HeLa cell lysate.



Please note: All products are 'FOR RESEARCH USE ONLY. NOT FOR USE IN DIAGNOSTIC OR THERAPEUTIC PROCEDURES'.