

Pygopus 2 Antibody

Rabbit mAb

Catalog # AP90143

Product Information

Application	WB, IHC, IF, ICC, IHF
Primary Accession	Q9BRQ0
Reactivity	Human, Mouse
Clonality	Monoclonal
Other Names	PP7910; PYGO2; Pygo2 protein; Pygopus 2;
Isotype	Rabbit IgG
Host	Rabbit
Calculated MW	41244

Additional Information

Dilution	WB 1:500~1:2000 IHC 1:50~1:200 ICC/IF 1:50~1:200
Purification	Affinity-chromatography
Immunogen	A synthesized peptide derived from human Pygopus 2
Description	Pygopus 2 is Involved in signal transduction through the Wnt pathway.
Storage Condition and Buffer	Rabbit IgG in phosphate buffered saline , pH 7.4, 150mM NaCl, 0.02% sodium azide and 50% glycerol. Store at +4°C short term. Store at -20°C long term. Avoid freeze / thaw cycle.

Protein Information

Name	PYGO2
Function	Involved in signal transduction through the Wnt pathway.
Cellular Location	Nucleus.

Images

Western blot analysis of Pygopus 2 in (1) HeLa cell lysate;
(2) MCF-7 cell lysate.

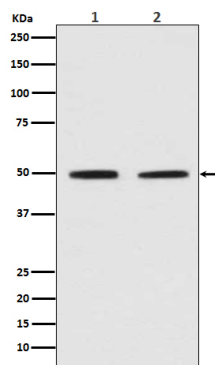


Image not found : 202311/AP90143-IHC.jpg

Immunohistochemical analysis of paraffin-embedded human uterus, using Pygopus 2 Antibody.

Please note: All products are 'FOR RESEARCH USE ONLY. NOT FOR USE IN DIAGNOSTIC OR THERAPEUTIC PROCEDURES'.