

ERG Antibody

Rabbit mAb

Catalog # AP90152

Product Information

Application	WB, IHC, IF, ICC, IP, IHF
Primary Accession	P11308
Reactivity	Rat, Human, Mouse
Clonality	Monoclonal
Other Names	ERG;erg-3;p55;KCNH2;
Isotype	Rabbit IgG
Host	Rabbit
Calculated MW	53838

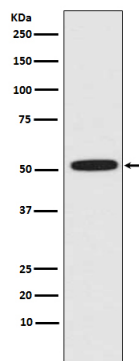
Additional Information

Dilution	WB 1:500~1:2000 IHC 1:50~1:200 ICC/IF 1:50~1:200
Purification	Affinity-chromatography
Immunogen	A synthesized peptide derived from human ERG
Description	This gene encodes a member of the erythroblast transformation-specific (ETS) family of transcriptions factors. All members of this family are key regulators of embryonic development, cell proliferation, differentiation, angiogenesis, inflammation, and apoptosis. The protein encoded by this gene is mainly expressed in the nucleus. It contains an ETS DNA-binding domain and a PNT (pointed) domain which is implicated in the self-association of chimeric oncoproteins.
Storage Condition and Buffer	Rabbit IgG in phosphate buffered saline , pH 7.4, 150mM NaCl, 0.02% sodium azide and 50% glycerol. Store at +4°C short term. Store at -20°C long term. Avoid freeze / thaw cycle.

Protein Information

Name	ERG
Function	Transcriptional regulator. May participate in transcriptional regulation through the recruitment of SETDB1 histone methyltransferase and subsequent modification of local chromatin structure.
Cellular Location	Nucleus {ECO:0000255 PROSITE-ProRule:PRU00237, ECO:0000269 PubMed:17289661}. Cytoplasm Note=Localized in cytoplasmic mRNP granules containing untranslated mRNAs

Images



Western blot analysis of ERG expression in HeLa cell lysate.

Image not found : 202311/AP90152-IHC.jpg

Immunohistochemical analysis of paraffin-embedded human kidney, using ERG Antibody.

Please note: All products are 'FOR RESEARCH USE ONLY. NOT FOR USE IN DIAGNOSTIC OR THERAPEUTIC PROCEDURES'.