

# Beclin 1 Antibody

Rabbit mAb

Catalog # AP90155

## Product Information

<b>Application</b>	WB, IHC, IF, ICC, IHF
<b>Primary Accession</b>	<a href="#">Q14457</a>
<b>Reactivity</b>	Rat, Human, Mouse
<b>Clonality</b>	Monoclonal
<b>Other Names</b>	ATG6; ATG6 autophagy related 6 homolog; Bcl-2-interacting protein beclin; Beclin 1 autophagy related;Beclin-1;Beclin1; BECN1; Protein GT197; VPS30;
<b>Isotype</b>	Rabbit IgG
<b>Host</b>	Rabbit
<b>Calculated MW</b>	51896

## Additional Information

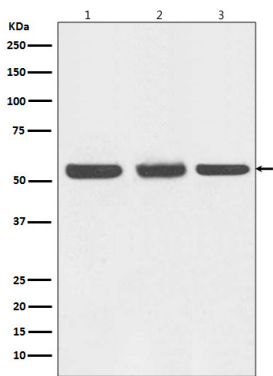
<b>Dilution</b>	WB 1:500~1:2000 IHC 1:50~1:200 ICC/IF 1:50~1:200
<b>Purification</b>	Affinity-chromatography
<b>Immunogen</b>	A synthesized peptide derived from human Beclin 1
<b>Description</b>	Plays a central role in autophagy. Required for the abscission step in cytokinesis. May play a role in antiviral host defense. Protects against infection by a neurovirulent strain of Sindbis virus.
<b>Storage Condition and Buffer</b>	Rabbit IgG in phosphate buffered saline , pH 7.4, 150mM NaCl, 0.02% sodium azide and 50% glycerol. Store at +4°C short term. Store at -20°C long term. Avoid freeze / thaw cycle.

## Protein Information

<b>Name</b>	BECN1
<b>Synonyms</b>	GT197
<b>Function</b>	Plays a central role in autophagy (PubMed: <a href="#">18570871</a> , PubMed: <a href="#">21358617</a> , PubMed: <a href="#">23184933</a> , PubMed: <a href="#">23974797</a> , PubMed: <a href="#">25484083</a> , PubMed: <a href="#">28445460</a> , PubMed: <a href="#">37776275</a> ). Acts as a core subunit of the PI3K complex that mediates formation of phosphatidylinositol 3-phosphate; different complex forms are believed to play a role in multiple membrane trafficking pathways: PI3KC3-C1 is involved in initiation of autophagosomes and PI3KC3-C2 in maturation of autophagosomes and endocytosis. Involved in regulation of degradative endocytic trafficking and required for the abscission step in cytokinesis, probably in the context of PI3KC3-C2 (PubMed: <a href="#">20208530</a> , PubMed: <a href="#">20643123</a> , PubMed: <a href="#">23974797</a> , PubMed: <a href="#">26783301</a> ). Essential for the formation of PI3KC3-C2 but not PI3KC3-C1 PI3K complex forms. Involved in endocytosis (PubMed: <a href="#">25275521</a> ). May play a role in antiviral host defense.

Cellular Location	Cytoplasm. Golgi apparatus, trans-Golgi network membrane; Peripheral membrane protein. Endosome membrane; Peripheral membrane protein. Endoplasmic reticulum membrane; Peripheral membrane protein. Mitochondrion membrane; Peripheral membrane protein. Endosome {ECO:0000250 UniProtKB:O88597} Cytoplasmic vesicle, autophagosome. Note=Interaction with ATG14 promotes translocation to autophagosomes. Expressed in dendrites and cell bodies of cerebellar Purkinje cells (By similarity) {ECO:0000250 UniProtKB:O88597, ECO:0000269 PubMed:19050071} [Beclin-1-C 37 kDa]: Mitochondrion {ECO:0000250 UniProtKB:O88597}
Tissue Location	Ubiquitous.

## Images



Western blot analysis of Beclin 1 expression in (1) HEK293 cell lysate; (2) NIH/3T3 cell lysate; (3) C6 cell lysate.

Image not found : 202311/AP90155-IHC.jpg	Immunohistochemical analysis of paraffin-embedded human breast cancer, using Beclin 1 Antibody.
Image not found : 202311/AP90155-IF.jpg	Immunofluorescent analysis of Hela cells, using Beclin 1 Antibody.

Please note: All products are 'FOR RESEARCH USE ONLY. NOT FOR USE IN DIAGNOSTIC OR THERAPEUTIC PROCEDURES'.