

HIF-2 alpha Antibody

Rabbit mAb

Catalog # AP90159

Product Information

Application	WB, IF, FC, ICC
Primary Accession	Q99814
Reactivity	Rat, Human, Mouse
Clonality	Monoclonal
Other Names	bHLHe73;ECYT4;EPAS 1;EPAS1;HIF2A;HLF;MOP 2;PASD2
Isotype	Rabbit IgG
Host	Rabbit
Calculated MW	96459

Additional Information

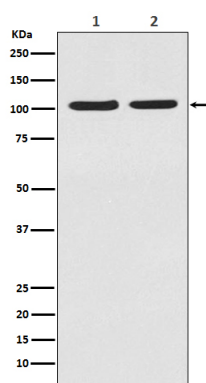
Dilution	WB 1:500~1:2000 ICC/IF 1:50~1:200 FC 1:50
Purification	Affinity-chromatography
Immunogen	A synthesized peptide derived from human HIF-2 alpha
Description	Transcription factor involved in the induction of oxygen regulated genes. Binds to core DNA sequence 5'-[AG]CGTG-3' within the hypoxia response element (HRE) of target gene promoters. Regulates the vascular endothelial growth factor (VEGF) expression and seems to be implicated in the development of blood vessels and the tubular system of lung. May also play a role in the formation of the endothelium that gives rise to the blood brain barrier.
Storage Condition and Buffer	Rabbit IgG in phosphate buffered saline , pH 7.4, 150mM NaCl, 0.02% sodium azide and 50% glycerol. Store at +4°C short term. Store at -20°C long term. Avoid freeze / thaw cycle.

Protein Information

Name	EPAS1
Synonyms	BHLHE73, HIF2A, MOP2, PASD2
Function	Transcription factor involved in the induction of oxygen regulated genes. Heterodimerizes with ARNT; heterodimer binds to core DNA sequence 5'-TACGTG-3' within the hypoxia response element (HRE) of target gene promoters (By similarity). Regulates the vascular endothelial growth factor (VEGF) expression and seems to be implicated in the development of blood vessels and the tubular system of lung. May also play a role in the formation of the endothelium that gives rise to the blood brain barrier. Potent activator of the Tie-2 tyrosine kinase expression. Activation requires recruitment of transcriptional coactivators such as CREBBP and probably EP300. Interaction with redox regulatory protein APEX1 seems to activate CTAD (By similarity).

Cellular Location	Nucleus {ECO:0000250 UniProtKB:P97481, ECO:0000255 PROSITE-ProRule:PRU00981}. Nucleus speckle {ECO:0000250 UniProtKB:P97481}. Note=Colocalizes with HIF3A in the nucleus and speckles. {ECO:0000250 UniProtKB:P97481}
Tissue Location	Expressed in most tissues, with highest levels in placenta, lung and heart. Selectively expressed in endothelial cells

Images



Western blot analysis of HIF-2 alpha in (1)MCF-7 cell lysate;(2)HeLa cell lysate.

Please note: All products are 'FOR RESEARCH USE ONLY. NOT FOR USE IN DIAGNOSTIC OR THERAPEUTIC PROCEDURES'.