

ARG1 Antibody

Rabbit mAb

Catalog # AP90162

Product Information

Application	WB, IP
Primary Accession	P05089
Reactivity	Rat, Human, Mouse
Clonality	Monoclonal
Other Names	ARG1; Arginase-1; Liver-type arginase; Type I arginase; Arginase liver; Liver Arginase;
Isotype	Rabbit IgG
Host	Rabbit
Calculated MW	34735

Additional Information

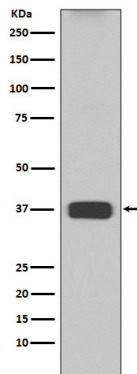
Dilution	WB 1:500~1:2000 IP 1:50
Purification	Affinity-chromatography
Immunogen	A synthesized peptide derived from human ARG1
Description	Arginase catalyzes the hydrolysis of arginine to ornithine and urea. At least two isoforms of mammalian arginase exist (types I and II) which differ in their tissue distribution, subcellular localization, immunologic crossreactivity and physiologic function. The type I isoform encoded by this gene, is a cytosolic enzyme and expressed predominantly in the liver as a component of the urea cycle.
Storage Condition and Buffer	Rabbit IgG in phosphate buffered saline , pH 7.4, 150mM NaCl, 0.02% sodium azide and 50% glycerol. Store at +4°C short term. Store at -20°C long term. Avoid freeze / thaw cycle.

Protein Information

Name	ARG1
Function	Key element of the urea cycle converting L-arginine to urea and L-ornithine, which is further metabolized into metabolites proline and polyamides that drive collagen synthesis and bioenergetic pathways critical for cell proliferation, respectively; the urea cycle takes place primarily in the liver and, to a lesser extent, in the kidneys.
Cellular Location	Cytoplasm. Cytoplasmic granule. Note=Localized in azurophil granules of neutrophils (PubMed:15546957)
Tissue Location	Within the immune system initially reported to be selectively expressed in granulocytes (polymorphonuclear leukocytes [PMNs]) (PubMed:15546957). Also detected in macrophages mycobacterial granulomas

(PubMed:23749634). Expressed in group2 innate lymphoid cells (ILC2s) during lung disease (PubMed:27043409)

Images



Western blot analysis of ARG1 expression in Mouse liver lysate.

Image not found : 202311/AP90162-IHC.jpg

Immunohistochemical analysis of paraffin-embedded human kidney, using ARG1 Antibody.

Please note: All products are 'FOR RESEARCH USE ONLY. NOT FOR USE IN DIAGNOSTIC OR THERAPEUTIC PROCEDURES'.