

SATB2 Antibody

Rabbit mAb

Catalog # AP90164

Product Information

Application	WB, IHC, IF, ICC, IHF
Primary Accession	Q9UPW6
Reactivity	Rat, Human, Mouse
Clonality	Monoclonal
Other Names	GLSS; SATB family member 2; SATB homeobox 2; SATB2; Special AT rich sequence binding protein 2;
Isotype	Rabbit IgG
Host	Rabbit
Calculated MW	82555

Additional Information

Dilution	WB 1:500~1:2000 IHC 1:50~1:200 ICC/IF 1:50~1:200
Purification	Affinity-chromatography
Immunogen	A synthesized peptide derived from human SATB2
Description	Binds to DNA, at nuclear matrix- or scaffold-associated regions. Thought to recognize the sugar-phosphate structure of double-stranded DNA. Transcription factor controlling nuclear gene expression, by binding to matrix attachment regions (MARs) of DNA and inducing a local chromatin-loop remodeling. Acts as a docking site for several chromatin remodeling enzymes and also by recruiting corepressors (HDACs) or coactivators (HATs) directly to promoters and enhancers.
Storage Condition and Buffer	Rabbit IgG in phosphate buffered saline , pH 7.4, 150mM NaCl, 0.02% sodium azide and 50% glycerol. Store at +4°C short term. Store at -20°C long term. Avoid freeze / thaw cycle.

Protein Information

Name	SATB2
Synonyms	KIAA1034
Function	Binds to DNA, at nuclear matrix- or scaffold-associated regions. Thought to recognize the sugar-phosphate structure of double- stranded DNA. Transcription factor controlling nuclear gene expression, by binding to matrix attachment regions (MARs) of DNA and inducing a local chromatin-loop remodeling. Acts as a docking site for several chromatin remodeling enzymes and also by recruiting corepressors (HDACs) or coactivators (HATs) directly to promoters and enhancers. Required for the initiation of the upper-layer neurons (UL1) specific genetic program and for the inactivation of deep-layer neurons (DL) and UL2 specific genes, probably by modulating BCL11B

expression. Repressor of Ctip2 and regulatory determinant of corticocortical connections in the developing cerebral cortex. May play an important role in palate formation. Acts as a molecular node in a transcriptional network regulating skeletal development and osteoblast differentiation.

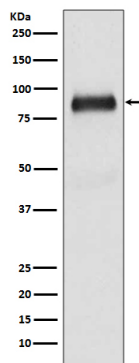
Cellular Location

Nucleus matrix {ECO:0000255 | PROSITE- ProRule:PRU00108, ECO:0000255 | PROSITE-ProRule:PRU00374, ECO:0000269 | PubMed:14701874}

Tissue Location

High expression in adult brain, moderate expression in fetal brain, and weak expression in adult liver, kidney, and spinal cord and in select brain regions, including amygdala, corpus callosum, caudate nucleus, and hippocampus.

Images



Western blot analysis of SATB2 expression in Saos-2 cell lysate.

Image not found : 202311/AP90164-IHC.jpg

Immunohistochemical analysis of paraffin-embedded human stomach cancer, using SATB2 Antibody.

Image not found : 202311/AP90164-IF.jpg

Immunofluorescent analysis of SH-SY5Y cells, using SATB2 Antibody .

Please note: All products are 'FOR RESEARCH USE ONLY. NOT FOR USE IN DIAGNOSTIC OR THERAPEUTIC PROCEDURES'.