

CD46 Antibody

Rabbit mAb

Catalog # AP90174

Product Information

Application	WB, IHC, IF, ICC, IHF
Primary Accession	P15529
Reactivity	Human
Clonality	Monoclonal
Other Names	MCP; MIC10; TLX; TRA2.10; CD46;
Isotype	Rabbit IgG
Host	Rabbit
Calculated MW	43747

Additional Information

Dilution	WB 1:500~1:2000 IHC 1:50~1:200 ICC/IF 1:50~1:200
Purification	Affinity-chromatography
Immunogen	A synthesized peptide derived from human CD46
Description	CD46 is a type I membrane protein and a regulatory part of the complement system. This protein has cofactor activity for inactivation of complement components C3b and C4b by serum factor I, which protects the host cell from damage by complement. In addition, CD46 can act as a receptor for the Edmonston strain of measles virus, human herpesvirus-6, and type IV pili of pathogenic Neisseria.
Storage Condition and Buffer	Rabbit IgG in phosphate buffered saline , pH 7.4, 150mM NaCl, 0.02% sodium azide and 50% glycerol. Store at +4°C short term. Store at -20°C long term. Avoid freeze / thaw cycle.

Protein Information

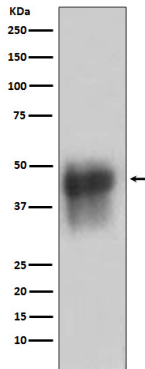
Name	CD46
Synonyms	MCP, MIC10
Function	Acts as a cofactor for complement factor I, a serine protease which protects autologous cells against complement-mediated injury by cleaving C3b and C4b deposited on host tissue. May be involved in the fusion of the spermatozoa with the oocyte during fertilization. Also acts as a costimulatory factor for T-cells which induces the differentiation of CD4+ into T-regulatory 1 cells. T-regulatory 1 cells suppress immune responses by secreting interleukin-10, and therefore are thought to prevent autoimmunity.
Cellular Location	Cytoplasmic vesicle, secretory vesicle, acrosome inner membrane; Single-pass type I membrane protein. Note=Inner acrosomal membrane of spermatozoa. Internalized upon binding of Measles virus, Herpesvirus 6 or Neisseria

gonorrhoeae, which results in an increased susceptibility of infected cells to complement-mediated injury. In cancer cells or cells infected by *Neisseria*, shedding leads to a soluble peptide

Tissue Location

Expressed by all cells except erythrocytes.

Images



Western blot analysis of CD46 in K562 cell lysate.

Image not found : 202311/AP90174-IHC.jpg

Immunohistochemical analysis of paraffin-embedded human colon, using CD46 Antibody.

Please note: All products are 'FOR RESEARCH USE ONLY. NOT FOR USE IN DIAGNOSTIC OR THERAPEUTIC PROCEDURES'.