

CDX2 Antibody

Rabbit mAb

Catalog # AP90176

Product Information

Application	WB, IHC, IF, FC, ICC, IHF
Primary Accession	Q99626
Reactivity	Rat, Human, Mouse
Clonality	Monoclonal
Other Names	caudal type homeo box transcription factor 2; Homeobox protein CDX-2; Caudal-type homeobox protein 2; CDX3
Isotype	Rabbit IgG
Host	Rabbit
Calculated MW	33520

Additional Information

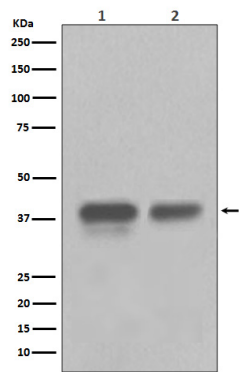
Dilution	WB 1:500~1:2000 IHC 1:50~1:200 ICC/IF 1:50~1:200 FC 1:50
Purification	Affinity-chromatography
Immunogen	A synthesized peptide derived from human CDX2
Description	Involved in the transcriptional regulation of multiple genes expressed in the intestinal epithelium. Important in broad range of functions from early differentiation to maintenance of the intestinal epithelial lining of both the small and large intestine.
Storage Condition and Buffer	Rabbit IgG in phosphate buffered saline , pH 7.4, 150mM NaCl, 0.02% sodium azide and 50% glycerol. Store at +4°C short term. Store at -20°C long term. Avoid freeze / thaw cycle.

Protein Information

Name	CDX2
Synonyms	CDX3
Function	Transcription factor which regulates the transcription of multiple genes expressed in the intestinal epithelium (By similarity). Binds to the promoter of the intestinal sucrase-isomaltase SI and activates SI transcription (By similarity). Binds to the DNA sequence 5'-ATAAAAACTTAT-3' in the promoter region of VDR and activates VDR transcription (By similarity). Binds to and activates transcription of LPH (By similarity). Activates transcription of CLDN2 and intestinal mucin MUC2 (By similarity). Binds to the 5'-AATTTTTCACAACACCT-3' DNA sequence in the promoter region of CA1 and activates CA1 transcription (By similarity). Important in broad range of functions from early differentiation to maintenance of the intestinal epithelial lining of both the small and large intestine. Binds preferentially to methylated DNA (PubMed: 28473536).

Cellular Location	Nucleus {ECO:0000250 UniProtKB:P43241}.
Tissue Location	Detected in small intestine, colon and pancreas.

Images



Western blot analysis of CDX2 in (1) HEK293 cell lysate; (2) Colon cancer lysate.

Image not found : 202311/AP90176-IHC.jpg

Immunohistochemical analysis of paraffin-embedded human colon, using CDX2 Antibody.

Please note: All products are 'FOR RESEARCH USE ONLY. NOT FOR USE IN DIAGNOSTIC OR THERAPEUTIC PROCEDURES'.