

KDEL Antibody

Rabbit mAb

Catalog # AP90207

Product Information

Application	WB, IHC, IF, FC, ICC, IHF
Primary Accession	P24390
Reactivity	Rat, Human, Mouse
Clonality	Monoclonal
Other Names	KDEL; Lys Asp Glu Leu;
Isotype	Rabbit IgG
Host	Rabbit
Calculated MW	24542

Additional Information

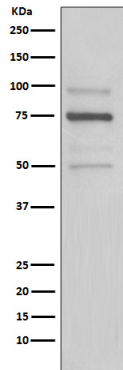
Dilution	WB 1:500~1:2000 IHC 1:50~1:200 ICC/IF 1:50~1:200 FC 1:50
Purification	Affinity-chromatography
Immunogen	A synthesized peptide derived from human KDEL
Description	This receptor recognizes K-D-E-L. The sequence Lys-Asp-Glu-Leu (KDEL) or a closely related sequence, is present at the carboxy-terminus of soluble endoplasmic reticulum (ER) resident proteins and some membrane proteins. Determines the specificity of the luminal ER protein retention system. Required for the retention of luminal endoplasmic reticulum proteins. Determines the specificity of the luminal ER protein retention system. Also required for normal vesicular traffic through the Golgi.
Storage Condition and Buffer	Rabbit IgG in phosphate buffered saline , pH 7.4, 150mM NaCl, 0.02% sodium azide and 50% glycerol. Store at +4°C short term. Store at -20°C long term. Avoid freeze / thaw cycle.

Protein Information

Name	KDELRL1
Synonyms	ERD2.1
Function	Receptor for the C-terminal sequence motif K-D-E-L that is present on endoplasmic reticulum resident proteins and that mediates their recycling from the Golgi back to the endoplasmic reticulum.
Cellular Location	Golgi apparatus membrane; Multi-pass membrane protein {ECO:0000250 UniProtKB:P33946}. Cytoplasmic vesicle, COPI-coated vesicle membrane; Multi-pass membrane protein {ECO:0000250 UniProtKB:P33946}. Endoplasmic reticulum membrane; Multi-pass membrane protein {ECO:0000250 UniProtKB:P33946}. Endoplasmic reticulum-Golgi intermediate compartment membrane {ECO:0000250 UniProtKB:P33946}; Multi-pass

membrane protein {ECO:0000250|UniProtKB:P33946} Note=Localized in the Golgi in the absence of bound proteins with the sequence motif K-D-E-L. Trafficks back to the endoplasmic reticulum together with cargo proteins containing the sequence motif K-D-E-L

Images



Western blot analysis of KDEL expression in HeLa cell lysate.

Image not found : 202311/AP90207-IHC.jpg

Immunohistochemical analysis of paraffin-embedded human liver, using KDEL Antibody.

Please note: All products are 'FOR RESEARCH USE ONLY. NOT FOR USE IN DIAGNOSTIC OR THERAPEUTIC PROCEDURES'.